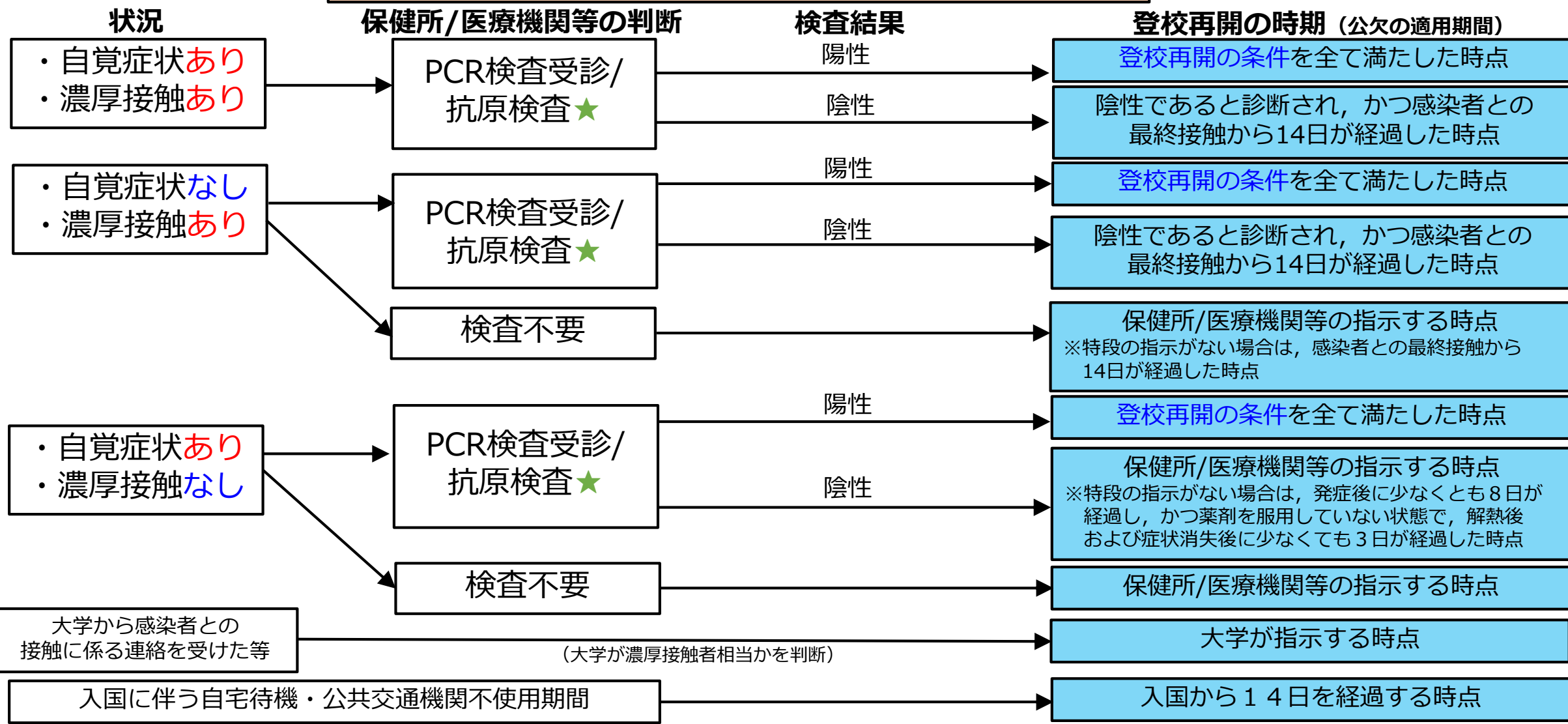


新型コロナウイルス感染対応フロー【学生用】



※濃厚接触あり：
保健所による認定があった場合やCOCOA通知（濃厚接触者の可能性は高くないとなった場合を除く）等に基づき判断する。

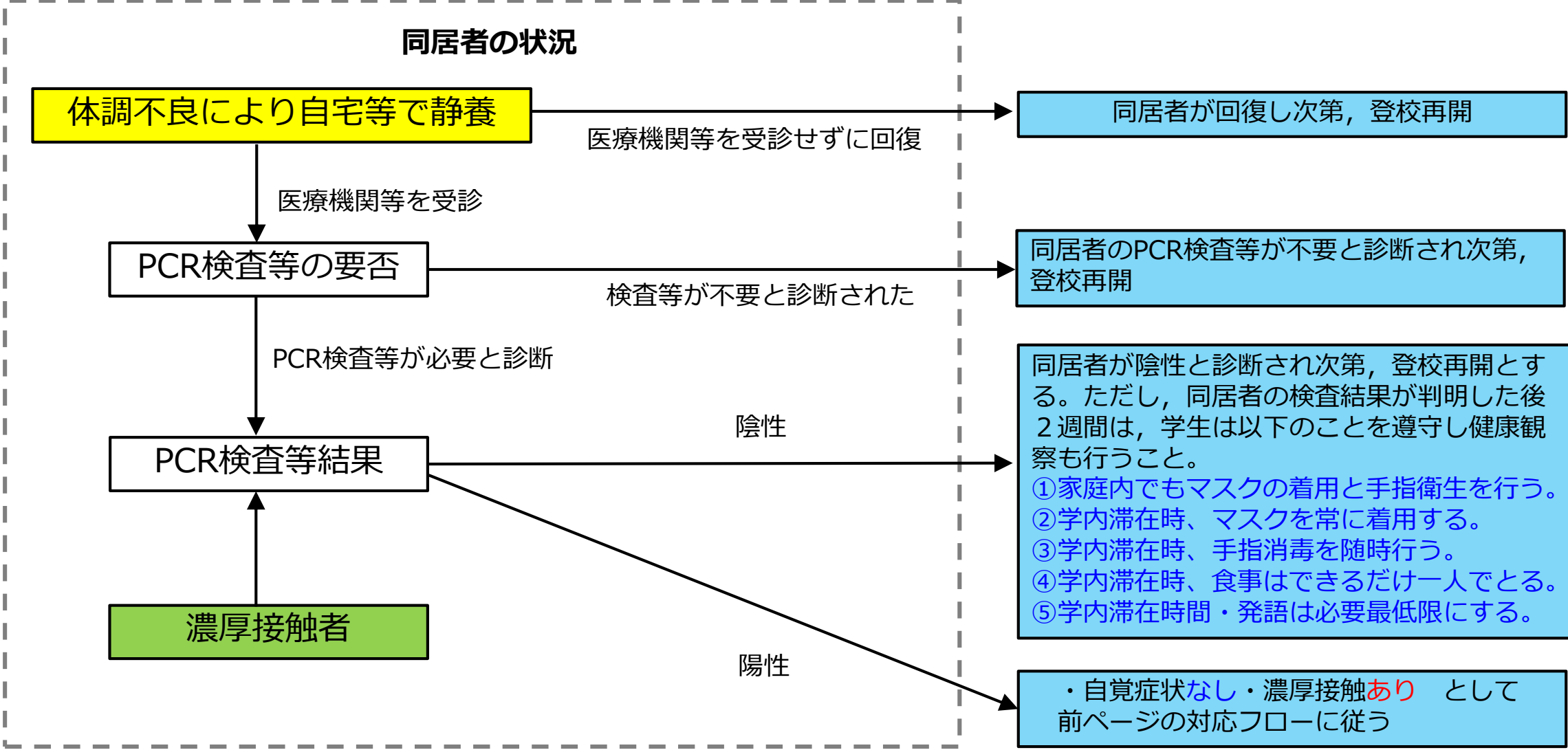
★印のタイミングで必ず下記に連絡ください。
 <専用メールアドレス> pcrtteststudent@jim.titech.ac.jp
 <指導教員> 研究室に所属している学生は、指導教員にも連絡してください。

登校再開の条件：
 ・発症後（自覚症状なしの場合は、PCR検査実施日の後）に少なくとも10日が経過している
 ・薬剤を服用していない状態で、解熱後および症状消失後に少なくとも72時間が経過している
 ・療養場所からの退去・退院から1週間が経過している

* 自覚症状も濃厚接触もないが、何らかの理由で自発的にPCR検査または抗原検査を受け、陽性となった場合は、登校再開の条件を全て満たした時点が登校再開の時期となる。陰性の場合、登校に制限はない。
 * 新型コロナウイルス感染症に起因する公欠の取扱いについて https://www.titech.ac.jp/covid-19/pdf/gakumu_20210108-3.pdf

同居者が体調不良・濃厚接触者になった場合の対応フロー

登校再開の時期（公欠の適用期間）



Summary of COVID-19 Guidance for Students

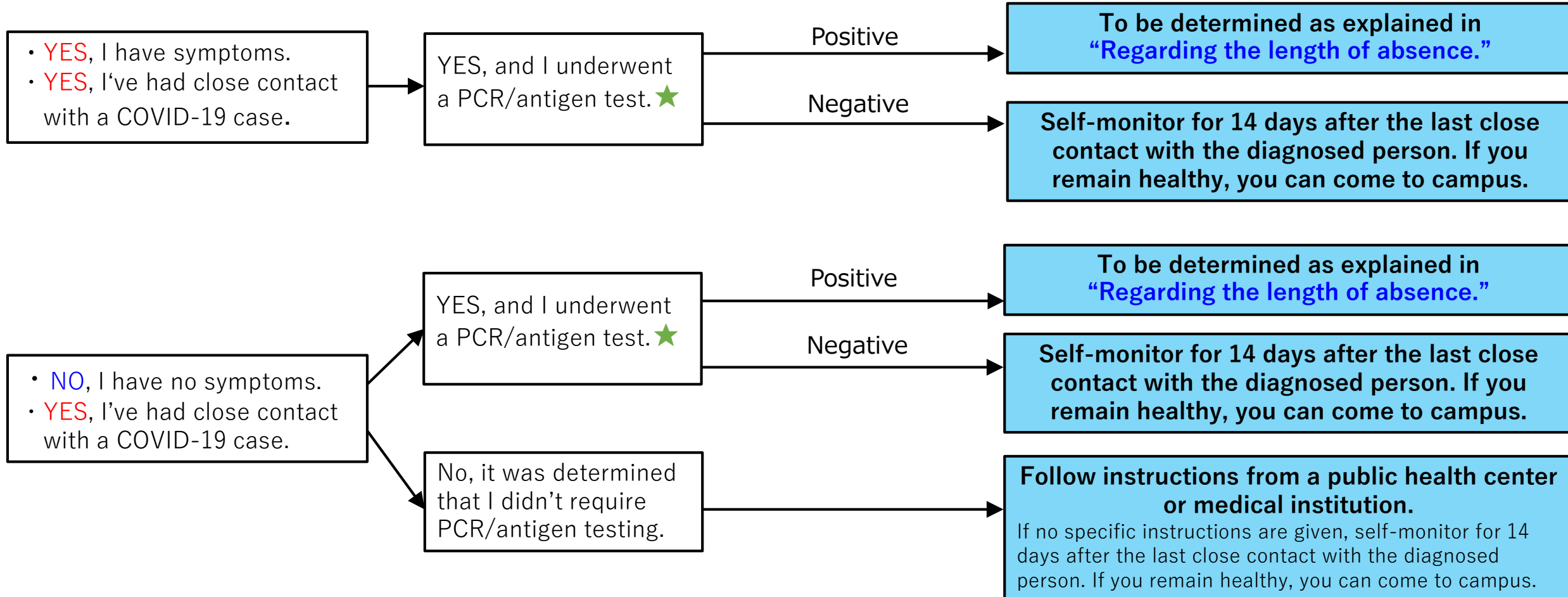
2021.5.20

- Do you have symptoms associated with COVID-19?
- Have you been in close contact with someone diagnosed with COVID-19?

Did a public health center or medical institution determine that you require PCR or antigen testing?

Did you test negative or positive?

When you can come to campus?
(Authorized absences may be granted until the conditions are met.)



- Do you have symptoms associated with COVID-19?
- Have you been in close contact with someone diagnosed with COVID-19?

Did a public health center or medical institution determine that you require PCR or antigen testing?

Did you test negative or positive?

When you can come to campus?
(Authorized absences may be granted until the conditions are met.)

• **YES**, I have symptoms.
• **NO**, I've had no known close contact with a COVID-19 case.

YES, and I underwent a PCR/antigen test. ★

No, it was determined that I didn't require PCR/antigen testing.

Positive

Negative

To be determined as explained in "Regarding the length of absence."

Follow instructions from a public health center or medical institution.

If no specific instructions are given, the absence must continue until both of the following conditions are met:
-At least 8 days have passed since symptoms first appeared. (The day of the onset of illness is Day 0.)
-At least 3 days have passed since symptoms were resolved without the use of medication. (The day symptoms are resolved is Day 0.)

Follow instructions from a public health center or medical institution.

I was informed by Tokyo Tech that I might have been in close contact with someone diagnosed with COVID-19.

Tokyo Tech determines whether you are considered equivalent to a Close Contact.

After the period separately specified by Tokyo Tech ends

I'm currently overseas, and need to self-quarantine and refrain from using public transportation for a certain period after arriving in Japan.

After the 14-day quarantine period is complete

(Individuals arriving in Japan from overseas must self-quarantine and refrain from using public transportation for 14 days, counting from the day after the arrival date.)

A public health center will assess various factors and determine whether people have been in close contact with someone diagnosed with COVID-19. Even if individuals are notified of possible exposure by the COVID-19 Contact-Confirming Application (COCOA), there may be cases where it is not considered as a close contact.

★ If a student is to undergo a PCR or antigen test, they must inform Tokyo Tech via email at pcteststudent@jim.titech.ac.jp, and notify its result as well. In addition, those affiliated with laboratories must contact their academic supervisors.

Regarding the length of absence

The absence must continue until all the following conditions are satisfied:

- At least 10 days have passed since symptoms first appeared. (The day of the onset of illness is Day 0.) For asymptomatic cases, at least 10 days have passed since the PCR/Antigen test. (The day of the PCR/Antigen test is Day 0.)
- At least 3 days have passed since fever and other symptoms were resolved without the use of medications. (The day symptoms are resolved is Day 0.)
- One week has passed since discharge from hospital or isolation at a designated facility.

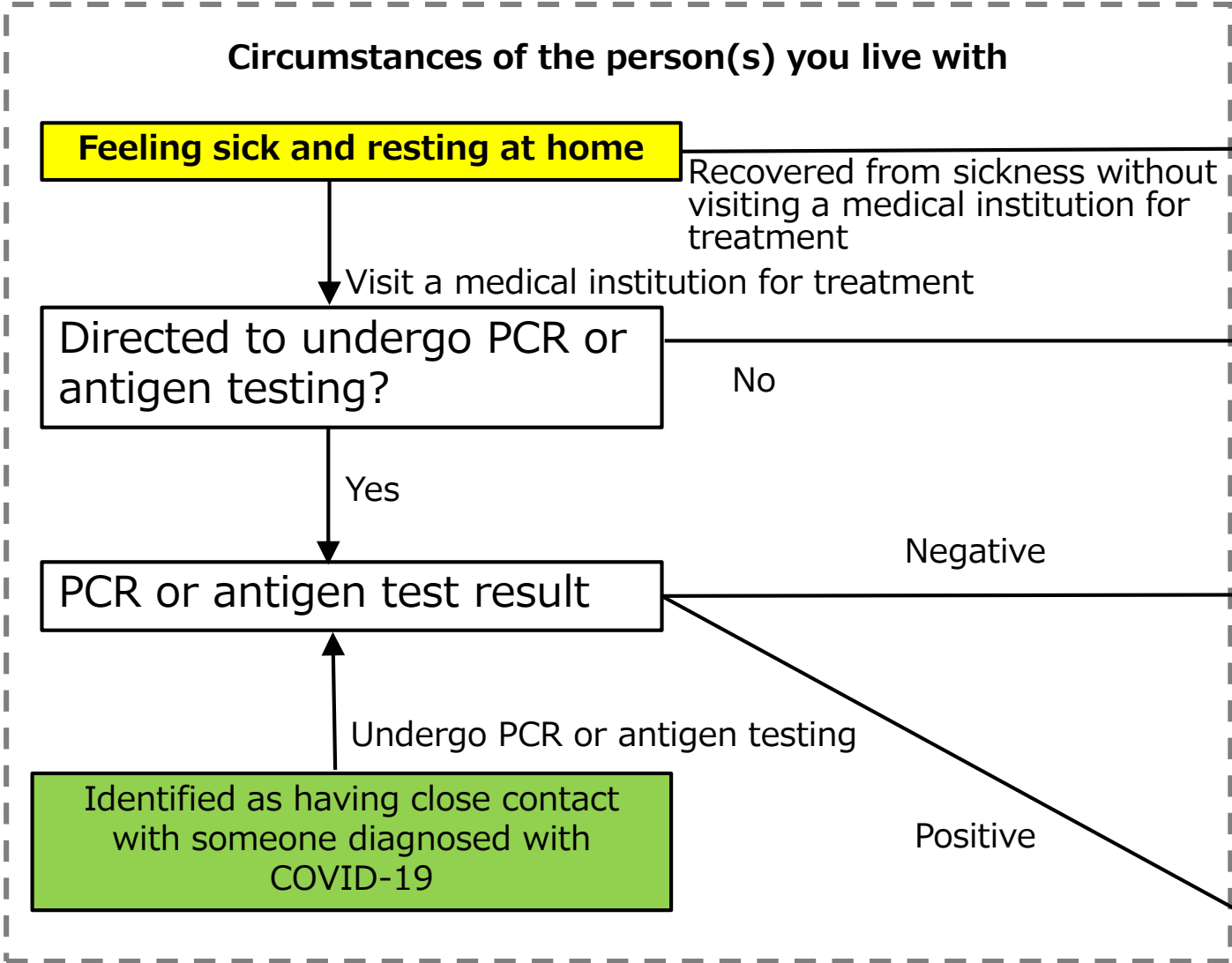
Notes:

You may decide to undergo a PCR or antigen test for certain reasons, regardless of whether you have symptoms or you have had close contact with someone diagnosed with COVID-19. If you undergo a test and receive a positive result, you are not permitted to come to campus until all the conditions stated in “Regarding the length of absence” are satisfied. Coming to campus is not restricted if the result is negative.

Information regarding handling of authorized absences due to COVID-19 is available at the link below:

https://www.titech.ac.jp/covid-19/pdf/gakumu_20210108-3.pdf

If someone you live with feels sick or is identified as having close contact with someone diagnosed with COVID-19



When you can come to campus (Authorized absences may be granted until the conditions are met.)

After the relevant person recovers from sickness

After it is determined that the relevant person did not require PCR or antigen testing

After a negative PCR or antigen test result is obtained. However, you must monitor your own health and observe the following precautions for at least two weeks after the result is confirmed.

- ① Wear a mask and sanitize your hands even at home.
- ② Wear a mask while on campus.
- ③ Sanitize your hands frequently while on campus.
- ④ Avoid meals with others on campus.
- ⑤ Don't stay long on campus and avoid unnecessary conversation.

Follow instructions for students without symptoms but with close contact with a COVID-19 case (second case in the flowchart on p. 1).