

# VISA Issuance Procedures

## Japan

Int'l Student Exchange  
Division at Tokyo Tech



Visa Consulting Service



Tokyo Regional  
Immigration Bureau



Request the Applicant's COE  
through Visa Consulting Service

Request the Applicant's COE  
to the Immigration Bureau

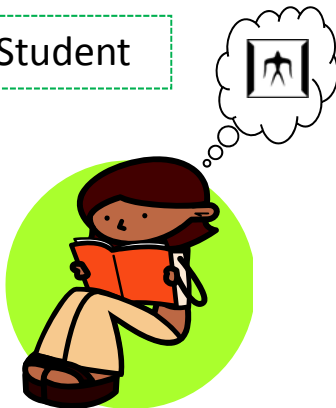
After the application form has been submitted to the Immigration Bureau,  
Certificate of Eligibility (COE) will be issued within 3 to 6 weeks.

<Documents prepared>

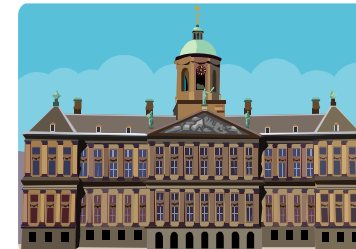
- Application for Certificate of Eligibility (COE)
- Verification Documents of the Applicant's Financial Status
- Copy of the Applicant's Passport
- Acceptance Letter from Tokyo Tech

## Overseas

Student



Japanese  
Embassy/Consulate



Request for Visa  
(Passport, COE, etc.)

Visa Issuance  
(takes about a week, depending  
on the country)

COE