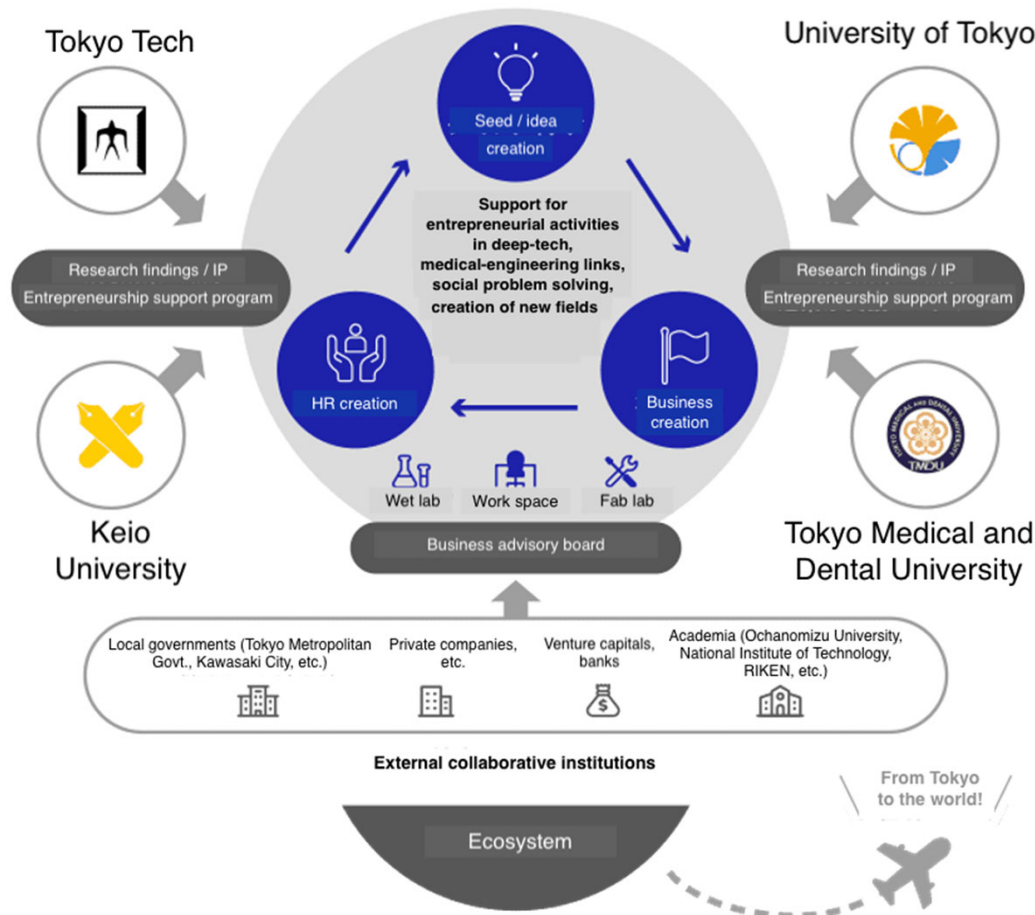


Innovation design Platform (IdP)

Tokyo Tech-led platform involving three other members of the Startup Ecosystem Tokyo Consortium — Keio University, Tokyo Medical and Dental University, and the University of Tokyo. Aims to foster and nurture a global startup ecosystem in Tokyo and other regions through collaborations with partner consortium institutions and platforms.



Innovation
design
Platform



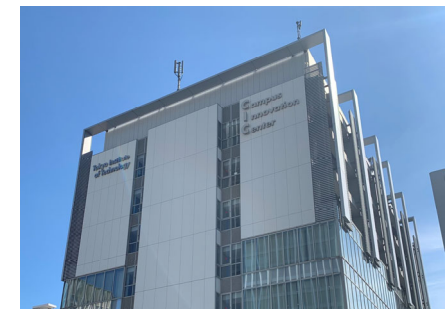
Vision of platform

- Nurturing university-based startups that change the world
- Collaborations involving good practices to achieve best practices
- Total goal from startups originating from participating institutions: JPY 5 trillion market capitalization

Planned incubation facilities

As part of IdP, incubation facilities for university-based entrepreneurs are being set up at Tokyo Tech's Campus Innovation Center on Tamachi Campus. When completed, these will include:

- Event spaces
- Co-working spaces
- Private booths



Campus Innovation Center Tokyo on Tamachi Campus

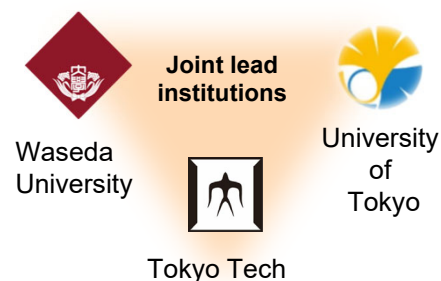
Greater Tokyo Innovation Ecosystem (GTIE)

From IdP to GTIE

The Greater Tokyo Innovation Ecosystem (GTIE), which further expands the IdP framework, was also selected as a JST START project (University Ecosystem Promotion Type (Supporting Creation of Startup Ecosystem in Startup Cities)). In collaboration with local governments and collaborative partners, GTIE will enhance entrepreneurship education and support, creating an ecosystem to foster university-launched startups that will change the world. Plan implementation: November 2021 to FY2025.

GTIE structure

Startup Ecosystem Tokyo Consortium



Fostering university-born startups that change the world

- Co-creating and contributing together with the Startup Ecosystem Tokyo Consortium
- KPIs for 2024: Double number of university-born startups from consortium universities to 1,066 companies, generate 20 unicorn companies

1. Execution of startup support programs
2. Development and execution of entrepreneurship training programs, etc.
3. Setup of startup environment
4. Formation and development of Gateway City ecosystem

Training programs (1. & 2.)
GTIE Schools participate in overseas accelerator programs

Provision of gap funds (1.)
Use of private funding, startup accompaniment, Demo Days

Support to acquire seed funding (1.)

Support to create links with large corporations (1. & 4.)
Creating opportunities to showcase technologies
Customer development via collaboration with business, local governments

Support to go global (4.)
Overseas investors / accelerators

Support for matching / team creation (1.)
Mixed GTIE institution teams
International student teams

JICA/JETRO/Stanford/
UCSD/UCB

Entrepreneurship training (2.)

Practical training / for undergrads / for junior high & high school students

GTIE community creation (1. & 4.)

Sharing of GTIE activity hubs / locations (3.)

Lead local governments

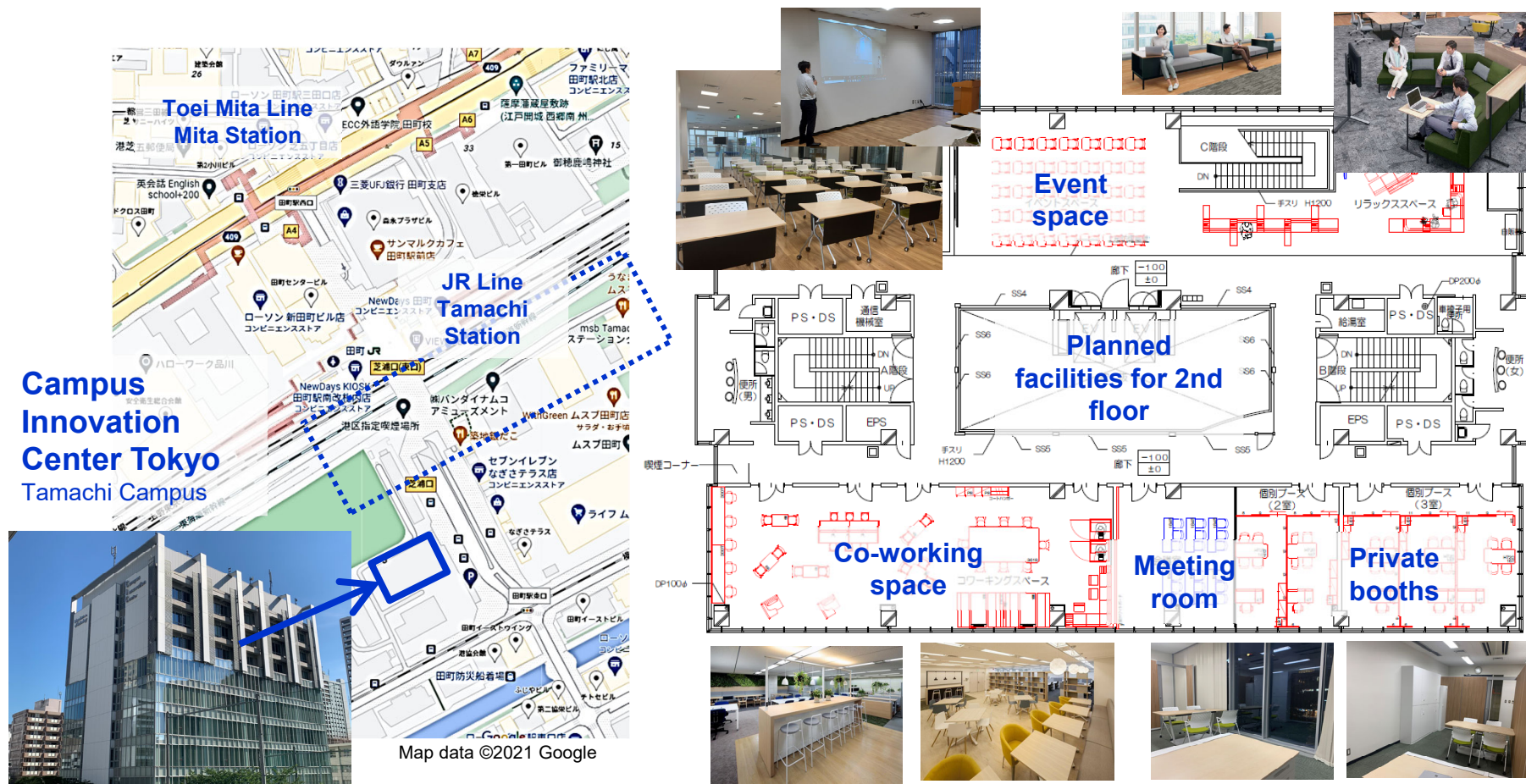
Tokyo Metropolitan Government, City of Yokohama, Kawasaki City, City of Tsukuba, Ibaraki Prefecture, Shibuya City

Collaborative partners

Keio University, Tokyo Medical and Dental University, University of Tsukuba, Chiba University, Tokyo University of Agriculture and Technology, Ochanomizu University, Yokohama National University, Yokohama City University, Tokyo Metropolitan University, Kanagawa University of Human Services, Life Science Innovation Network Japan (LINK-J), Shibuya Scramble Square Corporation, CIC Japan G.K.

Enhanced environment to support startups on Tokyo Tech's Tamachi Campus

Tokyo Tech is preparing the Innovation design Hub (IdHub) on the 2nd floor of its Campus Innovation Center Tokyo (CIC) facilities on Tamachi Campus. This facility will include private booths, co-working spaces, a meeting room, modules for online meetings, an event space, a community manager office, and an office dedicated to business collaborations. In the future, the space will expand to the 3rd and 4th floors, creating an integrated incubation and acceleration facility.



Planned initiatives to enhance startup support environment on Tokyo Tech's Tamachi Campus

Initially, space will be available on the 2nd floor of Campus Innovation Center Tokyo. Expansion to the 3rd and 4th floors is planned for FY22 to provide increased space where startup companies, teams, and supporters can meet and interact, boosting support for the creation of university-born startups.

