

PRESS RELEASE

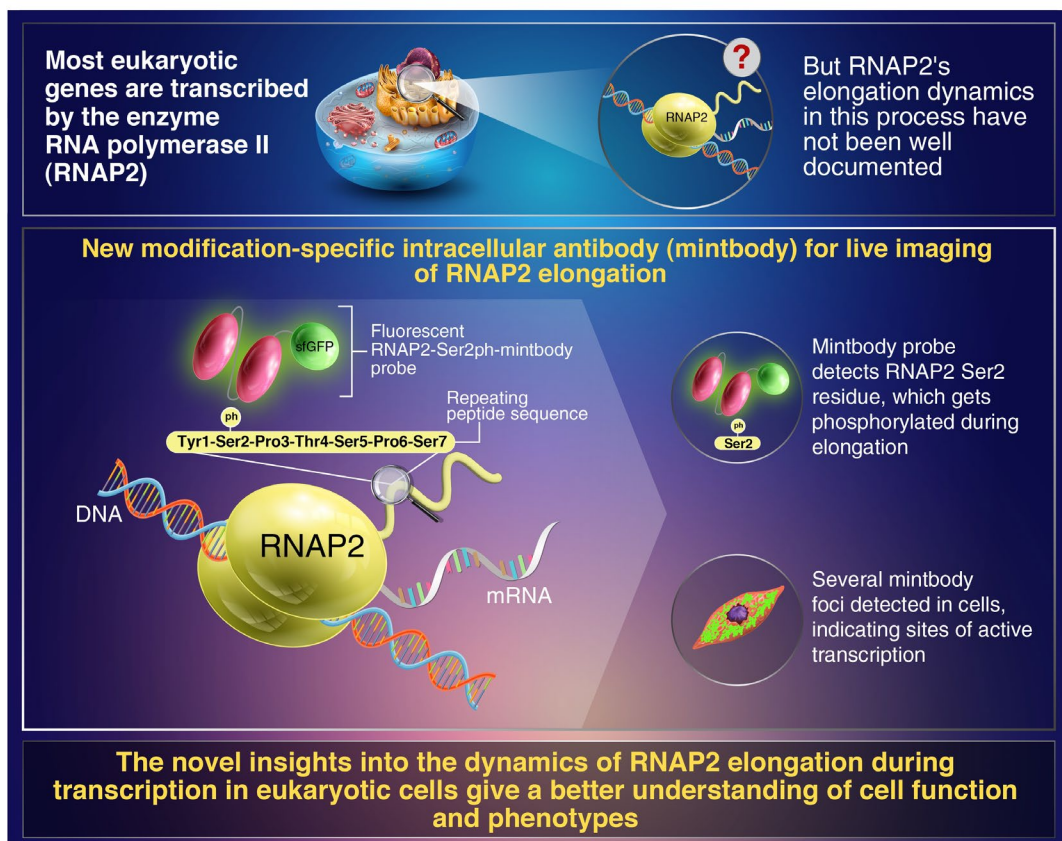
Source: Tokyo Institute of Technology

For immediate release: December 3, 2021

Caught on Camera: Live Imaging of Transcription Using Active RNA Polymerase II-Specific Probes

(Tokyo, December 3) A genetically encoded “live-cell” probe designed by researchers from Tokyo Tech has been able to identify phosphorylated Ser2 in the enzyme RNA polymerase II, subsequently identifying sites of the elongation phase of active transcription in living cells. This probe could be used to specifically image transcription elongation in real time in living animals, furthering gene regulation research by leaps and bounds.

Visualizing Transcription Elongation in Live Cells Using RNA Polymerase II-Specific Probes



Live Imaging of Transcription Sites Using an Elongating RNA Polymerase II-specific Probe
Uchino et al. (2021) | Journal of Cell Biology | DOI: 10.1083/jcb.202104134



In nuclei of all eukaryotic cells, an enzyme known as RNA polymerase II (RNAP2) is responsible for transcribing nearly all the genes that give us our different characteristics. Therefore, to get a better idea of the entire eukaryotic genome regulation and the functions of various cells,

RNAP2 behavior in live cells has been analyzed using fluorescent protein-tagged RNAP2 molecules. While this approach has advanced our knowledge on this protein's behavior significantly, a cell typically contains more than 100,000 RNAP2 molecules and thousands of active transcription sites or "factories," and it is very difficult to track single RNAP2 foci when the entire cell lights up like a lightbulb because of the fluorescence!

Recently, a method of live-cell visualization involving the use of fluorescently tagged antigen-binding fragments has yielded localization of specifically modified protein forms. Based on this approach, a group of researchers from Tokyo Institute of Technology and Kyushu University, led by Prof. Hiroshi Kimura, developed a genetically encoded "live-cell" probe to monitor a modified version of RNAP2 that is prevalent in cells during transcription. Their findings have been published in the [*Journal of Cell Biology*](#).

Prof. Kimura explains their rationale very simply, "In humans, most genes are transcribed by RNAP2, which is a 12-unit complex structure. The largest subunit has a long tail consisting of 52 repeats of seven amino acids. During transcription elongation phase, one of these seven amino acids, Ser2, is phosphorylated. We attempted to detect this Ser2-phosphorylated, active RNAP2 in living cells."

A genetically encoded probe is more convenient in terms of introducing into cells than protein probes, as the cells keep producing it forever once the genetic material encoding the probe is integrated into the host DNA. Prof. Kimura's team developed a genetically encoded modification-specific intracellular antibody (conveniently referred to as a "mintbody") probe, called RNAP2-Ser2ph-mintbody, to detect RNAP2 Ser2 phosphorylation.

On examining the cells using high-resolution microscopy, they found the presence of the RNAP2-Ser2ph-mintbody in regions with active transcription. "Numerous mintbody foci were found, almost like transcription 'factories'," Prof. Kimura tells us, "This could indicate that the RNAP2-Ser2ph-mintbody can recognize active transcription sites."

The researchers saw that the RNAP2-Ser2ph-mintbody became diminished during cellular mitosis and in the presence of RNAP2 inhibitors. Additionally, they noted that the RNAP2-Ser2ph-mintbody turned up more often in association with other proteins involved in the elongation phase of transcription, rather than those involved in the initiation and termination phases. The RNAP2-Serph2 foci in the cells were relatively more mobile than DNA replication domains, suggesting that loci where transcription elongation is taking place are separate and more mobile than confined chromatin domains.

What does this mean for the future of genetic research? "Understanding the regulation of RNAP2 can help us understand genomes, cell functioning, and phenotypes," Prof. Kimura elaborates.

Indeed, transcription is the first step to protein production, and localizing sites of active transcription gives us a target to observe the process. Understanding how DNA is read by RNAP2 could provide vital clues about the final outcome of protein synthesis.

The promising results of this study could fuel future research in genetics and gene regulation and widen our knowledge about the human genome.

Reference

Authors: Satoshi Uchino¹, Yuma Ito¹, Yuko Sato^{1,2}, Tetsuya Handa^{2*}, Yasuyuki Ohkawa³, Makio Tokunaga¹, Hiroshi Kimura^{1,2}

Title of original paper: Live Imaging of Transcription Sites Using an Elongating RNA Polymerase II-specific Probe

Journal: *Journal of Cell Biology*

DOI: [10.1083/jcb.202104134](https://doi.org/10.1083/jcb.202104134)

Affiliations: ^{1,2} Tokyo Institute of Technology, Japan
³ Kyushu University, Japan
^{2*} Current address – Cancer Research UK, Cambridge, UK

*Corresponding author's email: hkimura@bio.titech.ac.jp

Related Links

KIMURA LAB

http://kimura-lab.bio.titech.ac.jp/index_en.html

Hiroshi Kimura - How one fertilized egg leads to different cells and tissues - Research on epigenome

<https://www.titech.ac.jp/english/public-relations/research/stories/faces35-kimura>

Histone modifications are the influencers of zygotic genome awakening

<https://www.titech.ac.jp/english/news/2019/045378>

It's not an antibody, it's a frankenbody: A new tool for live-cell imaging

<https://www.titech.ac.jp/english/news/2019/044671>

When less is more: A promising approach for low-cell-number epigenomic profiling

<https://www.titech.ac.jp/english/news/2018/043131>

Catching histones by the tail: a new probe to track histone modifications in living cells

<https://www.titech.ac.jp/english/news/2016/036065>

Contact

Emiko Kawaguchi

Public Relations Division,

Tokyo Institute of Technology

media@jim.titech.ac.jp

+81-3-5734-2975

About Tokyo Institute of Technology

Tokyo Tech stands at the forefront of research and higher education as the leading university for science and technology in Japan. Tokyo Tech researchers excel in fields ranging from materials science to biology, computer science, and physics. Founded in 1881, Tokyo Tech hosts over 10,000 undergraduate and graduate students per year, who develop into scientific leaders and some of the most sought-after engineers in industry. Embodying the Japanese philosophy of “monotsukuri,” meaning “technical ingenuity and innovation,” the Tokyo Tech community strives to contribute to society through high-impact research.

<https://www.titech.ac.jp/english/>