

PRESS RELEASE

Source: Earth-Life Science Institute, Tokyo Institute of Technology

For immediate release: June 25, 2018

Using artificial intelligence to understand volcanic eruptions from tiny ash

(Tokyo, June 25)

Scientists led by Daigo Shoji from the Earth-Life Science Institute (Tokyo Institute of Technology) have shown that an artificial intelligence program called a Convolutional Neural Network can be trained to categorize volcanic ash particle shapes. Because the shapes of volcanic particles are linked to the type of volcanic eruption, this categorization can help provide information on eruptions and aid volcanic hazard mitigation efforts.

Volcanic eruptions come in many different forms, from the explosive eruptions of Iceland's Eyjafjallajökull in 2010, which disrupted European air travel for a week, to the Hawaiian Islands' relatively tranquil May 2018 lava flows. Likewise, these eruptions have different associated threats, from ash clouds to lava. Sometimes the eruption mechanism (e.g., water and magma interaction) is not obvious, and needs to be carefully evaluated by volcanologists to determine future threats and responses. Volcanologists look closely at the ash produced by eruptions (e.g., Fig. 1), as different eruptions produce ash particles of varying shapes. But how does one look at thousands of tiny samples objectively to produce a cohesive picture of the eruption? Classification by eye is the usual method, but it is slow, subjective, and limited by the availability of experienced volcanologists. Conventional computer programs are quick to classify particles by objective parameters, like circularity, but the selection of parameters remains the task because simple shape categorized by one parameter is rarely found in nature.

Enter the Convolutional Neural Network (CNN), an artificial intelligence designed to analyze imagery. Unlike other computer programs, CNN is not limited to simple parameters like circularity, and learns organically like a human, but thousands of times faster. The program can also be shared, removing the need for dozens of trained geologists in the field. For this experiment, the program was fed images of hundreds of particles with one of four basal shapes, which are created by different eruption mechanisms (examples are shown in Fig. 2). Ash particles that are blocky when rocks are fragmented by eruptions, vesicular when lava is bubbly, elongated when particles are molten and squished, and rounded from the surface tension of fluids, like droplets of water. The experiment successfully taught the program to classify the basal shapes with a success rate of 92%, and assign probability ratios to each particle even for the uncertain shape (Fig. 3). This may allow for an additional layer of complexity to the data in the future, providing scientists better tools to determine eruption type such as whether an eruption was phreatomagmatic (like second phase of Eyjafjallajökull eruption in 2010) or magmatic (like flank eruptions of Mt. Etna).

Dr Shoji's study has shown that CNN's can be trained to find useful, complex information about tiny particles with vast geological value. To increase the range of the CNN, more advanced magnification techniques, such as an Electron Microscopy, can add color and texture to the results. From

collaboration with biologists, computer scientists, and geologists, the research team hopes to use the CNN in new ways. The microcosmic world has always been a myriad of questions, but thanks to a few scientists studying volcanoes, answers may no longer be so hard to find.

Reference

Daigo Shoji¹, Rina Noguchi^{2,5}, Shizuka Otsuki³ & Hideitsu Hino⁴, Classification of volcanic ash particles using a convolutional neural network and probability, *Scientific Reports*, DOI: 10.1038/s41598-018-26200-2

1. Earth-Life Science Institute, Tokyo Institute of Technology
2. Volcanic Fluid Research Center, School of Science, Tokyo Institute of Technology
3. Geological Survey of Japan, AIST
4. The Institute of Statistical Mathematics
5. Institute of Space and Astronautical Science, Japan Aerospace Exploration Agency

*Corresponding authors email: shoji@elsi.jp

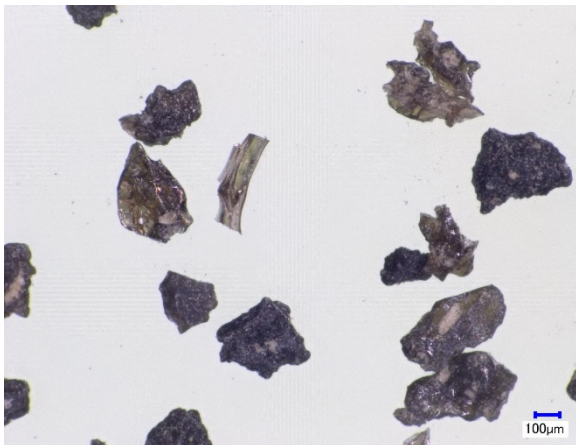


Figure 1. Volcanic ash under the microscope comprises thousands of tiny particles with complex shapes

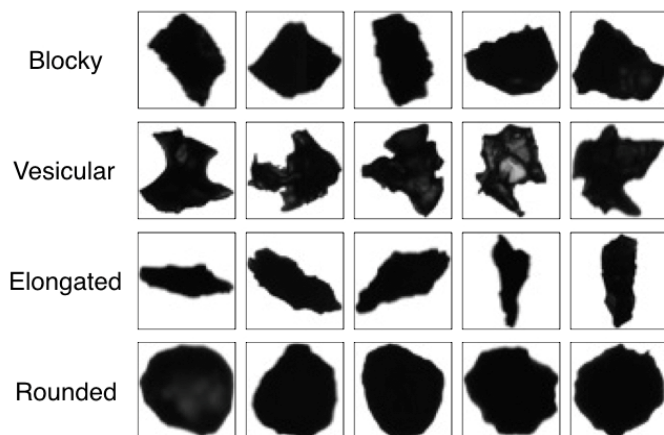


Figure 2. Four idealized categories to simplify classification

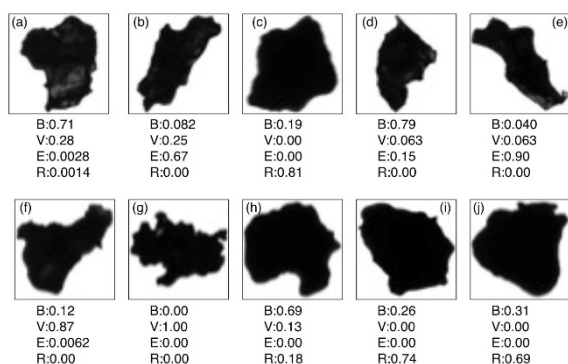


Figure 3. Results of the Convolutional Neural Network. The ash particles have been assigned a probability ratio for each of the four basal shapes: Blocky (B), Vesicular (V), Elongated (E), and Rounded (R).

Contact

PR Office

Earth-Life Science Institute (ELSI), Tokyo Institute of Technology

E-mail: pr@elsi.jp

Tel: +81-3-5734-3163 Fax: +81-3-5734-3416

Tokyo Institute of Technology (Tokyo Tech)

Tokyo Tech stands at the forefront of research and higher education as the leading university for science and technology in Japan. Tokyo Tech researchers excel in fields ranging from materials science to biology, computer science, and physics. Founded in 1881, Tokyo Tech hosts over 10,000 undergraduate and graduate students per year, who develop into scientific leaders and some of

the most sought-after engineers in industry. Embodying the Japanese philosophy of “monotsukuri,” meaning “technical ingenuity and innovation,” the Tokyo Tech community strives to contribute to society through high-impact research. <http://www.titech.ac.jp/english/>

About Earth-Life Science Institute (ELSI)

Launched in 2012, ELSI is one of Japan’s ambitious World Premiere International research centers, whose aim is to achieve progress in broadly inter-disciplinary scientific areas by inspiring the world’s greatest minds to come to Japan and work on the most challenging issues as a collaborative effort. ELSI’s primary aim is to address the co-origin and co-evolution of the Earth and life.

About WPI

The World Premier International Research Center Initiative (WPI) was launched in 2007 by the Ministry of Education, Culture, Sports, Science and Technology (MEXT) in a drive to build “globally visible” research centers in Japan. These institutes aim to boast a very high research standard and outstanding research environment that attracts frontline researchers from around the world to come and work in them. These centers are given a high degree of autonomy, allowing them to revolutionize conventional modes of research operation and administration in Japan.