

PRESS RELEASE

Source:

Tokyo Institute of Technology
School of Science, The University of Tokyo
Tohoku University

For immediate release: June 27, 2019

Subject line: **A peculiar ground-state phase for superconductor NbSe₂—It's a Bose metal!**

(Tokyo, June 27) **The application of large enough magnetic fields results in the disruption of superconducting states in materials even at drastically low temperature, thereby changing them directly into insulators—or so was traditionally thought. Now, scientists at Tokyo Institute of Technology, The University of Tokyo and Tohoku University report curious multi-state transitions of these superconductors: going from superconductor to special metal and then to insulator.**

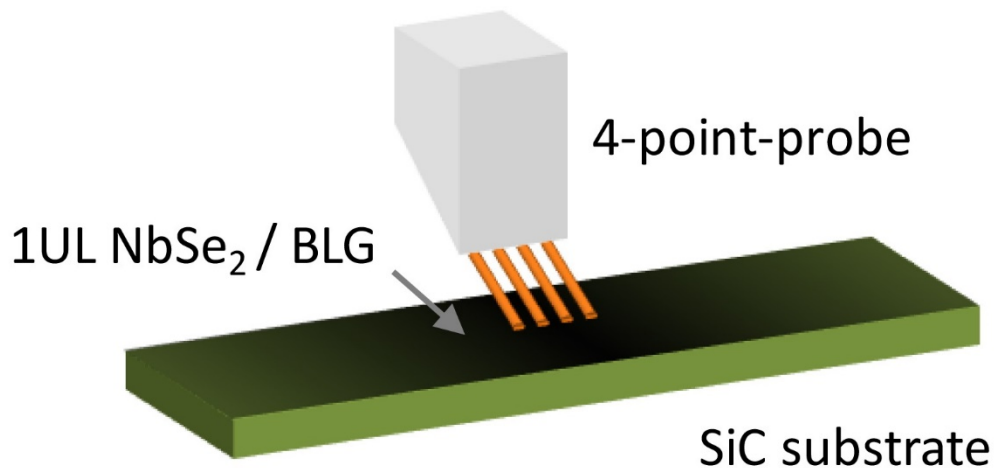


Figure 1. Electrical transport measurements

Schematic figure of the four-point probe used for analyzing the electron transport properties in ultrahigh vacuum. The superconductor is one unit-layer (UL) NbSe₂ grown on a bilayer graphene (BLG) on SiC substrate.

Characterized by their zero electrical resistance or alternatively their ability to completely expel external magnetic fields, superconductors have fascinating prospects for both fundamental physics and applications for e.g., superconducting coils for magnets. This phenomenon is understood by considering a highly ordered relationship between the electrons of the system; due to a coherence over the entire system, electrons form bounded pairs and flow without collisions, as a collective, resulting in a perfect conducting state without energy dissipation. However, upon introducing a magnetic field the electrons are no longer able to maintain their coherent relationship and the superconductivity is lost. For a given temperature, the highest magnetic field under which a material remains superconducting is known as the critical field.

Often these critical points are marked by phase transitions. If the change is abrupt like in the case of melting of ice, it is a first-order transition. If the transition takes place in a gradual and continuous manner by the growth of change-driving fluctuations extending on the entire system, it is called a second-order transition. Studying the transition path of superconductors when subjected to the critical field can yield insights into the quantum processes involved and allows us to design smarter superconductors (SCs) for application to advanced technologies.

Interestingly, two-dimensional superconductors (2DSCs) are the perfect candidates to study this type of phase transitions and one such novel candidate is a mono-unit layer of NbSe₂. Because smaller dimension (thickness) of superconductor implies a smaller number of possible partners for electrons to form superconducting pairs, the smallest perturbation can set a phase transition. Furthermore, 2DSC is relevant from the perspective of applications in small-scale electronics.

In such materials, raising the applied magnetic field past a critical value leads to a *fuzzy* state in which the magnetic field penetrates the material, but the resistance is still minimal. It is only upon increasing the magnetic field further that the superconductivity is destroyed. The material is rendered an ordinary insulator. This is called the superconductor to insulator phase transition. Because this phenomenon is observed at very low temperatures, the quantum fluctuations in the system become comparable to or even larger than the classical thermal fluctuations. Therefore, this is called a quantum phase transition.

To understand the path of phase transition as well as the fuzzy or mixed state that exists between the critical field strengths in the NbSe₂ ultrathin superconductor, a group of researchers measured the magnetoresistance of the material (see Fig. 1), or the response of a SC's resistivity when subjected to external magnetic field. In a nutshell (see Fig.2), Prof. Ichinokura lead summarizes, "Using a four-point probe, we estimated the critical magnetic field at the respective quantum phase boundaries in the mono-layered NbSe₂." They found that as a small magnetic field is applied to the SC, the coherent flow of electrons is broken, but the electron pairs still remain. This is due to motion of vortices; the moving vortices create a finite resistance. The origin of this minimal resistance was interpreted as the material entering a special metal state, called the Bose metal (BM), which changed into an insulating state upon further increasing the magnetic field. The team also found that the transition between normal and SC states around the critical temperature was driven by quantum fluctuations with also reflecting a similar multi-transition pathway. Excited by the results, Prof. Ichinokura comments, "The scaling analysis based on the model of the Bose metal explained the two-step transition, suggesting the existence of a bosonic ground state."

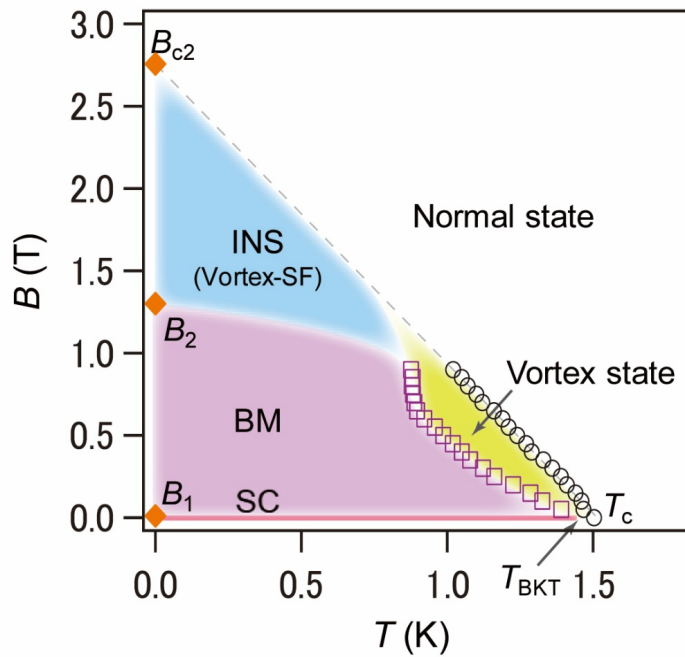


Figure 2. Superconductivity-related states

Schematically drawn phase diagram of superconductivity-related states in ultrathin NbSe₂. SC; superconductor, BM; Bose metal, INS; insulator, B₁, B₂, B_{c2}; magnetic fields at boundaries between the phases.

This study bolsters the theoretical claims of multi-phase transitions in superconductors thanks to the thinnest sample of atomic-scale thickness, and pushes the boundary of research further. This time it's the transition path that came out of investigating the fluctuating vortices; where will peeping into the vortex take us from here? Only science will tell!

Reference

Authors: Satoru Ichinokura,^{1*} Yuki Nakata,² Katsuaki Sugawara,^{2,3} Yukihiro Endo,¹ Akari Takayama,¹ Takashi Takahashi,^{2,3,4} and Shuji Hasegawa¹

Title of original paper: Vortex-induced quantum metallicity in the mono-unit-layer superconductor NbSe₂

Journal: *Physical Review B*

DOI: [10.1103/PhysRevB.99.220501](https://doi.org/10.1103/PhysRevB.99.220501)

Affiliations: ¹Department of Physics, The University of Tokyo, Japan
²Department of Physics, Tohoku University, Japan
³Center for Spintronics Research Network, Tohoku University, Japan
⁴WPI Research Center, Advanced Institute for Materials Research, Tohoku University, Japan

*Current address: Department of Physics, Tokyo Institute of Technology

*Corresponding author's email: ichinokura@phys.titech.ac.jp

Contact

Emiko Kawaguchi
Public Relations Section,
Tokyo Institute of Technology
media@jim.titech.ac.jp
+81-3-5734-2975

About Tokyo Institute of Technology

Tokyo Tech stands at the forefront of research and higher education as the leading university for science and technology in Japan. Tokyo Tech researchers excel in fields ranging from materials science to biology, computer science, and physics. Founded in 1881, Tokyo Tech hosts over 10,000 undergraduate and graduate students per year, who develop into scientific leaders and some of the most sought-after engineers in industry. Embodying the Japanese philosophy of “monotsukuri,” meaning “technical ingenuity and innovation,” the Tokyo Tech community strives to contribute to society through high-impact research.

<https://www.titech.ac.jp/english/>