

PRESS RELEASE

Source: Tokyo Institute of Technology, Tohoku University

For immediate release: April 10, 2018

Subject line: **Shaking up megathrust earthquakes with slow slip and fluid drainage**

(Tokyo, April 10) **Megathrust earthquakes are the most powerful type of earthquake, occurring at subduction zones - where one tectonic plate is pushed beneath another. By contrast, slow slip events (SSEs) release seismic stress at a lower rate than large earthquakes, re-occurring in cycles (across months to years). These processes can take place along the megathrust and other planes of weakness in response to loading, releasing low frequency seismic waves. Researchers at Tokyo Institute of Technology (Tokyo Tech) and Tohoku University consider the fluid drainage processes that can occur from SSEs and their impact on seismic activity.**

While the drainage of fluids during megathrust earthquakes has been thought to occur when the megathrusts open up new pathways for fluid drainage through deformation, little has been understood on whether such fluid movements occur as a result of SSEs. Professor Junichi Nakajima at Tokyo Tech and Associate Professor Naoki Uchida at Tohoku University have suggested that fluid drainage resulting from slow slip may be an additional contributor to megathrust seismic activity.

The team investigated the relationship between SSEs and seismic activity, while analyzing a rich dataset of seismic events around the Philippine Sea Plate. As shown in their recent publication in *Nature Geoscience*, the scientists analyzed waveform data from beneath Kanto, Japan, dating from 2004 to 2015 (as shown in Figure 1). They traced the boundary of the plate, to indicate when repeating earthquakes occurred in time, while correlating seismic activity with estimated slip-rates (as shown in Figure 2). They infer, through their analysis, that seismic activity above the megathrust of the Philippine Sea slab varied in response to SSEs, through episodic cycles. The scientists estimated intensive draining processes during SSEs, repeating at one year intervals; accompanied with fluid transport into the overlying plate.

In their publication, they discuss how pore-fluid pressures play a role, emphasizing that areas of slow slip tend to have extremely high pore fluid pressures, and thus have a high potential to release fluids into other portions of the rock bodies. It is suggested SSEs could cause the movement of fluid into overlying rock units (if there were enough fracture or pore space to do so), inducing weakness in these areas and triggering seismicity.

Based on this idea, the scientists speculate that if the overlying plate were impermeable (with no suitable spaces for fluid to move into), then fluid would be forced to travel through the mega thrust itself (rather than surrounding rock pores or fractures). This could in turn, help to trigger megathrust earthquake events as a result. Therefore, slow slip could catalyze seismic activity in megathrusts. While stress modulation are important contributors to megathrust-induced seismic activity, fluid transfer by episodic SSE may play a greater role than previously thought.

Reference

Authors: Junichi Nakajima^{1*} and Naoki Uchida²
Title of original paper: Repeated drainage from megathrusts during episodic slow slip
Journal: *Nature Geoscience*
DOI: [10.1038/s41561-018-0090-z](https://doi.org/10.1038/s41561-018-0090-z)
Affiliations: 1 Department of Earth and Planetary Sciences, School of Science, Tokyo Institute of Technology, Japan.
2 Research Center for Prediction of Earthquakes and Volcanic Eruptions, Graduate School of Science, Tohoku University, Japan.

*Corresponding author's email: nakajima@geo.titech.ac.jp

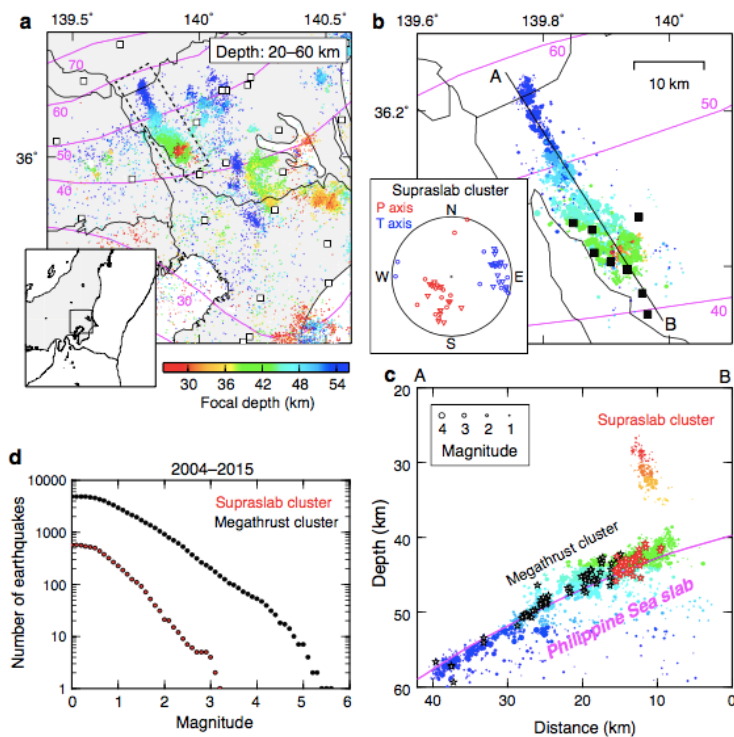


Figure 1. Seismicity from 2004 to 2015 along the Philippine Sea slab.

a – seismic activity from 2004–2015 along the Philippine Sea slab, b – relocated earthquakes, c – cross section along sample area (a–b), d – frequency magnitude distribution.

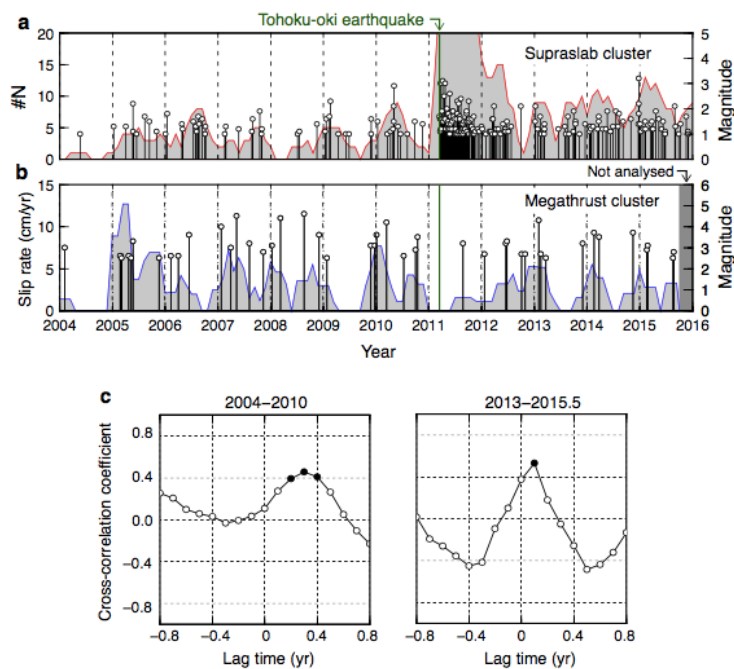


Figure 2. Correlations of supraslab earthquakes and megathrust slip rates. The number of supra-slab earthquakes, b- average slip rates on the megathrust, c- cross-correlation between supraslab seismicity and megathrust slip rates.

Contacts

Emiko Kawaguchi
 Public Relations Section,
 Tokyo Institute of Technology
media@jim.titech.ac.jp
 +81-3-5734-2975

About Tokyo Institute of Technology

Tokyo Institute of Technology stands at the forefront of research and higher education as the leading university for science and technology in Japan. Tokyo Tech researchers excel in a variety of fields, such as material science, biology, computer science and physics. Founded in 1881, Tokyo Tech has grown to host 10,000 undergraduate and graduate students who become principled leaders of their fields and some of the most sought-after scientists and engineers at top companies. Embodying the Japanese philosophy of “monotsukuri,” meaning technical ingenuity and innovation, the Tokyo Tech community strives to make significant contributions to society through high-impact research.

www.titech.ac.jp/english/