

To All Privately Financed International Students:

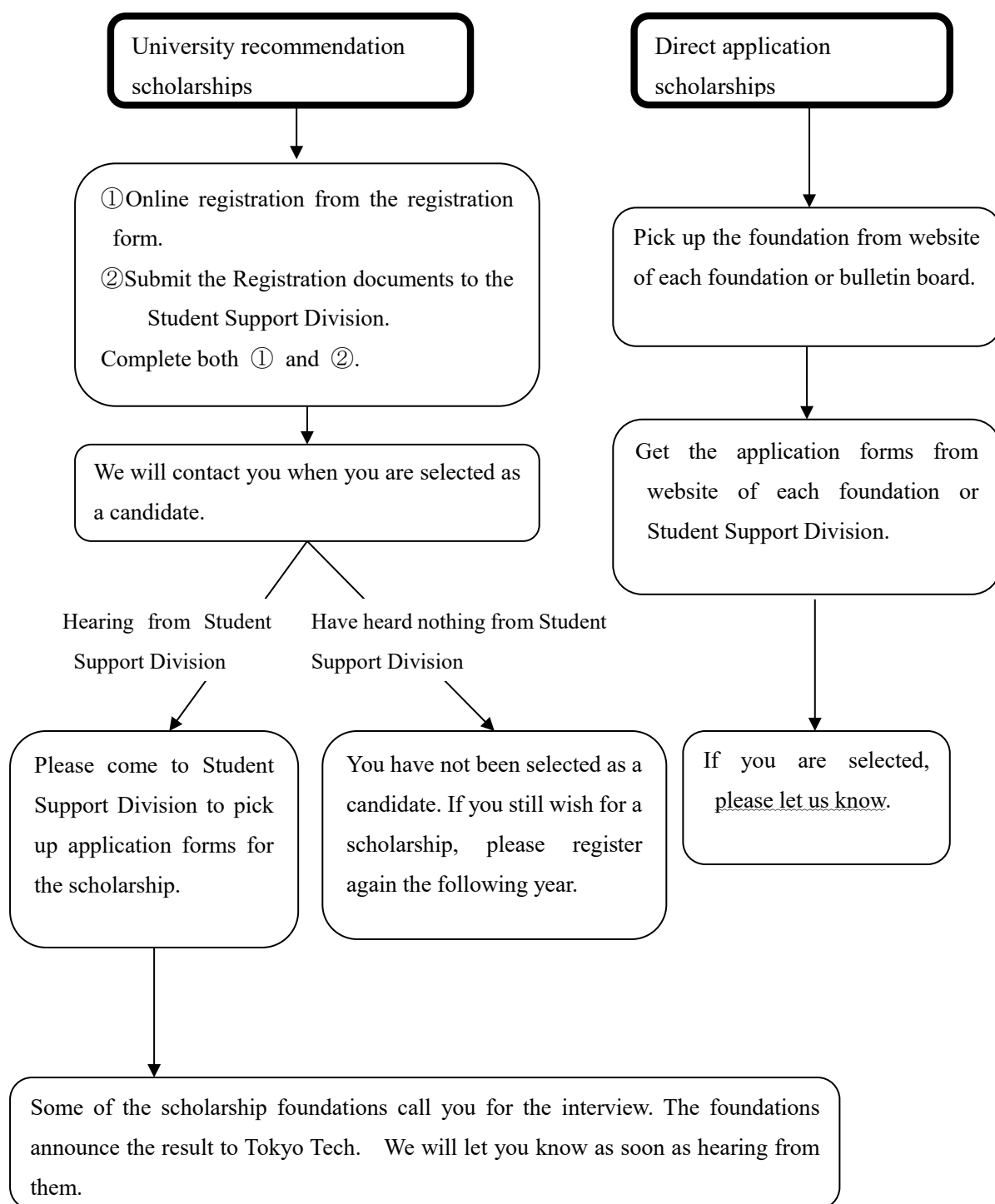
Student Support Division

Recommendation Criteria for Privately Funded Scholarships

Recommendation criteria for privately funded scholarships (including JASSO Honors Scholarship), which require recommendation from the Institute, are as follows:

- 1) Graduate students and undergraduate students are ranked separately.
Furthermore, research students are ranked below graduate students.
- 2) The following conditions are taken into account. Recommendation sheets are made in order starting from the person with the highest score.
 - (1) Enrollment Status (Four Levels)
graduate students: master course students below doctoral course students
undergraduate students : 1st and 2nd year students below 3rd and 4th year students
※Research students who have graduated undergraduate program are ranked the same as 3rd and 4th year students, and those who have graduated master's program are ranked the same as master course student.
 - (2) Official transcript (Four Levels)
We take into account about the record of your all credits registered.
 - (3) Research achievements (Four Levels) *only for graduate students
We take into account your investigations published in journals and presentations at academic meetings or conferences in the past year.
- 3) In case two or more persons have the same score, the person with the higher enrollment status will be ranked higher. Additionally, in the case that enrollment status is also the same, the person with the highest official transcript and research achievements will be ranked higher.
- 4) Based on the recommendation list made from the above recommendation standards, the scholarship selection committee will make the final recommendations taking the recruitment requirements of each scholarship foundation into consideration.

FLOWCHART for Privately Funded Scholarship



Scholarship FAQ (2020.9.11)

[About Scholarships]

Q. What should I do for receiving scholarship?

A. Privately-funded scholarships are divided into two types: one requires a university's recommendation, and the other requires no recommendation. For the scholarship WITH a university recommendation, please register for Scholarships requiring University recommendation. For the scholarship WITHOUT a university recommendation, anyone who meets the application requirements can apply. Information is posted on the bulletin board and the website for current students. You can also get more information at JASSO website for international students.

(https://www.jasso.go.jp/en/study_j/scholarships/index.html)

Q. Can I apply for both a scholarship WITH university's recommendation and a scholarship WITHOUT recommendation?

A. You can apply both, but in most cases you cannot receive both scholarships. If you are selected as a scholar of both scholarships, you must select the scholarship WITH recommendation and decline the one WITHOUT it.

Q. How many students receive the scholarship?

A. Usually 10 to 20 percent of all registered students get a scholarship.

[About Registration]

Q. What is registration for Privately Funded Scholarships requiring university recommendation?

A. You can register for the selection for ALL scholarships WITH a university recommendation by submitting the application forms.

Q. Is the registration once a year?

A. Yes, it is once a year. We will start the registration every fall and you can register anytime during the year. However, if you join Tokyo Tech in April and register, the next registration will start in September so the registration will be twice a year. And when you graduate undergraduate or Master program your registration will be deleted so you will have to register again with your new student ID.

Q. When will I know the result?

A. This is only a registration and it has no results. Registered students will be ranked with the Recommendation criteria (status, academic record, research achievement each 4 levels) and we will

pick up the candidates by referring this ranking system. When you are selected as a candidate, we will contact you directly. We will not contact you if you are not selected.

Q. I receive a scholarship now but it will end in March 2021. If I wish to receive a scholarship starting in April 2021, do I need to register this time?

A. Yes. Scholarships starting in April 2021 mainly start recruiting from November 2020 to May 2021. Please register this time.

Q. I receive a scholarship now but it will end in September 2021. If I wish to receive a scholarship starting in October 2021, do I need to register this time?

A. Yes. Some Scholarships starting in October 2021 start recruiting from spring 2021. Please register this time.

Q. Is it possible to change the registered contents later?

A. Regarding information other than research achievements, the registered contents can be changed according to changes in the situation. For example, if you have passed the Japanese Language Proficiency Test after registration, or changed your visa, please contact the Financial Aid Group by email first.

Q. I am currently overseas. Can I register?

A. As a general rule, only students who have already come to Japan to enroll Tokyo Tech can register. Those who are temporarily in their home country and planning to return to Japan soon can register too.

Q. Can I submit the registration document by e-mail?

A. We do not accept submissions by email. Please bring it to the Student Support Division or submit it by postal mail.

Q. The status of residence is not "Student". Can I register?

A. Registration is possible. However, many scholarship foundations limit their status of residence to "Student", so the chances of being selected will be low.

Q. I am a foreign national, but my VISA is "permanent resident". Can I register?

A. Registration is possible. However, many scholarship foundations limit their status of residence to "Student", so the chances of being selected will be low. Some scholarships for Japanese students can be applied for as "permanent residents", so please consider that as well.

Q. I am enrolled beyond the standard period. Can I register?

A. Registration is possible. However, many scholarship foundations are intended for students studying within the standard period of study so the chances of being selected will be low.

[About Selection]

Q. How does university decide a candidate for scholarship?

A. The committee organized by faculty of Tokyo Tech will pick up the candidates. Scholarship foundations ask us to recommend the candidates but they have each schedule. It depends on the schedule of each scholarship foundation.

Q. How much is a scholarship and how long can I receive it?

A. It depends on the scholarships.

Q. How do you calculate my grade?

A. We count every credit shown in your academic script and calculate your grade in a similar way to GPA. As for graduates, we also place importance on your Research Achievement Summary.

Q. When is the term of research achievement I should declare?

A. For the registration in 2020, your research achievement which is published from September 1, 2019 to August 31, 2020 is acceptable. The papers or presentation must be issued during the term. You cannot include materials to be released in the future.

Q. What is paper with “peer review”?

A. It is the paper published on a journal paper which need “peer review” when the paper is accepted.

Q. How much Japanese or English ability do I need?

A. We don't refer to the language ability to rank the registered students, but the Japanese language proficiency required by each foundation differs, so students who meet the requirements are selected according to the intentions of each foundation.

JASSO's Honors Scholarship is subject to Japanese proficiency N2 or higher, or English proficiency CEFR B2 level or higher. (TOEFL iBT 72 points or higher, IELTS 5.5 points or higher, or TOEIC L & R 785 points or higher). If you do not meet the requirements, we cannot recommend you.