



# SUZUKAKEDAI Student Guidance Room

## List of Faculty Advisors

Students can talk to the advisors in the following list. Please see the time table, how to apply for a meeting in the next page and contact the Student Guidance Room. Our information is at bottom of each page.

●★” indicates advisors specially assigned for international students.

●Male advisors & Female advisors differ in colors.

List of advisors of Student Guidance Room at SUZUKAKEDAI Campus (organizational order)

Advisors	Title	Department
Mie SHIMOJIMA	Associate Professor	Life Science and Technology / Life Science and Technology
Yasuko YANAGEDA	Professor	• Laboratory for Future Interdisciplinary Research of Science and Technology(FIRST) • Engineering / Mechanical Engineering
Sakae TOYODA	Associate Professor	• Materials and Chemical Technology / Materials Science and Engineering
Hitoshi KAWAJI	Professor	• Laboratory for Materials and Structures (MSL) • Materials and Chemical Technology / Materials Science and Engineering
Dan RICINSCHI★	Associate Professor	• Center for Entrepreneurship Education(CEE)
Hazel Bantolino GONZALES★	Associate Professor	• Center for Entrepreneurship Education(CEE)

📞 Please feel free to contact us for counseling.

Student Guidance Room at Suzukakedai Campus

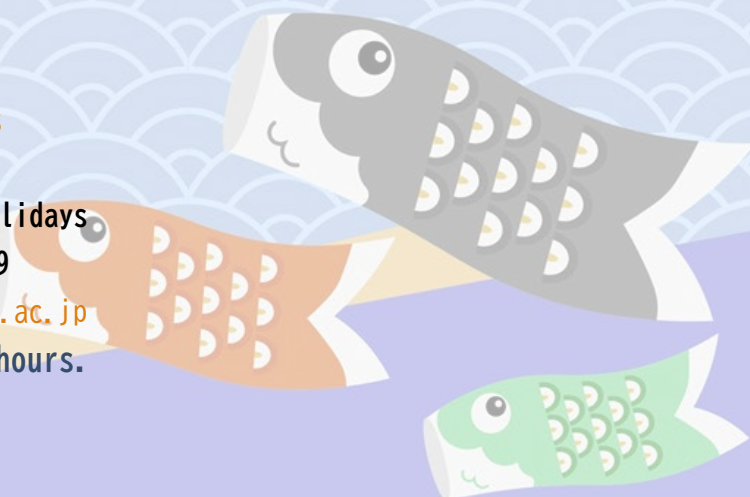
Daigakukaikan (Suzukake-Hall) H2 Bldg., Floor 1

Mon-Fri 9:00am - 5:00pm Closed on weekends & holidays

Phone : 045-924-5888 FAX : 045-924-5889

Email : [student.guidance.suzukakedai@ssc.isct.ac.jp](mailto:student.guidance.suzukakedai@ssc.isct.ac.jp)

\*Emails will be replied during the office hours.





# SUZUKAKEDAI Faculty Advisors' Office Schedule

## May 2025

Faculty Advisors are ready for counseling according to their schedule. We would recommend to book a meeting in advance.

Please use the application form <https://www.titech.ac.jp/english/student-support/pdf/sodanyoyaku-1.pdf> or give us the same information in your email message. Both face-to-face and online meetings are available on your request. We will connect you with other help desks whenever necessary.

●"★" indicates advisors specially assigned for international students.

●Male advisors & Female advisors differ in colors.

Day Time	Mon	Tue	Wed	Thu	Fri
10:45-12:00	<b>Sakae TOYODA</b> (Materials Science and Engineering)	<b>Hazel Bantolino GONZALES★</b> (CEE) ※unavailable on May. 6	<b>Mie SHIMOJIMA</b> (Life Science and Technology)	<b>Yasuko YANAGIDA</b> (FIRST/Mechanical Engineering)	
13:45-15:00	<b>Hitoshi KAWAJI</b> (MSL / Materials Science and Engineering)				
15:45-17:00			<b>Dan RICINSCHI★</b> (CEE)		

👉 Please feel free to contact us for counseling

**Student Guidance Room at Suzukakedai Campus**

Daigakukaikan (Suzukake-Hall) H2 Bldg., Floor 1

Mon-Fri 9:00am - 5:00pm Closed on weekends & holidays

Phone : 045-924-5888

FAX : 045-924-5889

email : [student.guidance.suzukakedai@ssc.isct.ac.jp](mailto:student.guidance.suzukakedai@ssc.isct.ac.jp)

\*Emails will be replied during the office hours.