



# TOKYO INSTITUTE OF TECHNOLOGY

**TOP RESEARCH**  
**UNIVERSITY in JAPAN**

## Degree Programs

### International Graduate Program (IGP)

- All lectures and guidance in English
- Master's (2 years), Doctoral (3 years), and "Integrated Doctoral Education Program"

## Non-Degree Programs

### International Exchange Students (from partner universities)

- YSEP • ACAP

### International Visiting Students (from non-partner universities)

# About Tokyo Tech



With a history spanning more than 130 years, Tokyo Institute of Technology (Tokyo Tech) is the top national university for science and technology in Japan. The Institute offers exceptional education through 6 Schools encompassing 19 departments, and its many research institutes are spread across three campuses in Ookayama, Suzukakedai, and Tamachi. Of the approximately 10,500 students, half are in their bachelor's degree program while the other half are in master's and doctoral degree programs. 1,800 students are international students.

## Voices from International Students

The combination of a unique culture, extraordinary people and the possibility to enhance my knowledge and research skills at the same time has made this an ideal summer program.

**Robin Fox** *Imperial College London, UK*

More than anything, this has fueled my passion for research and engineering, making me even more excited to follow through my career path.

**Eddie Tio** *University of Minnesota-Twin Cities, USA*

The greatest harvest from this program is my feeling about Japan, the country I've been interested in for a long time. I got to know the Japanese style of thinking, living and working.

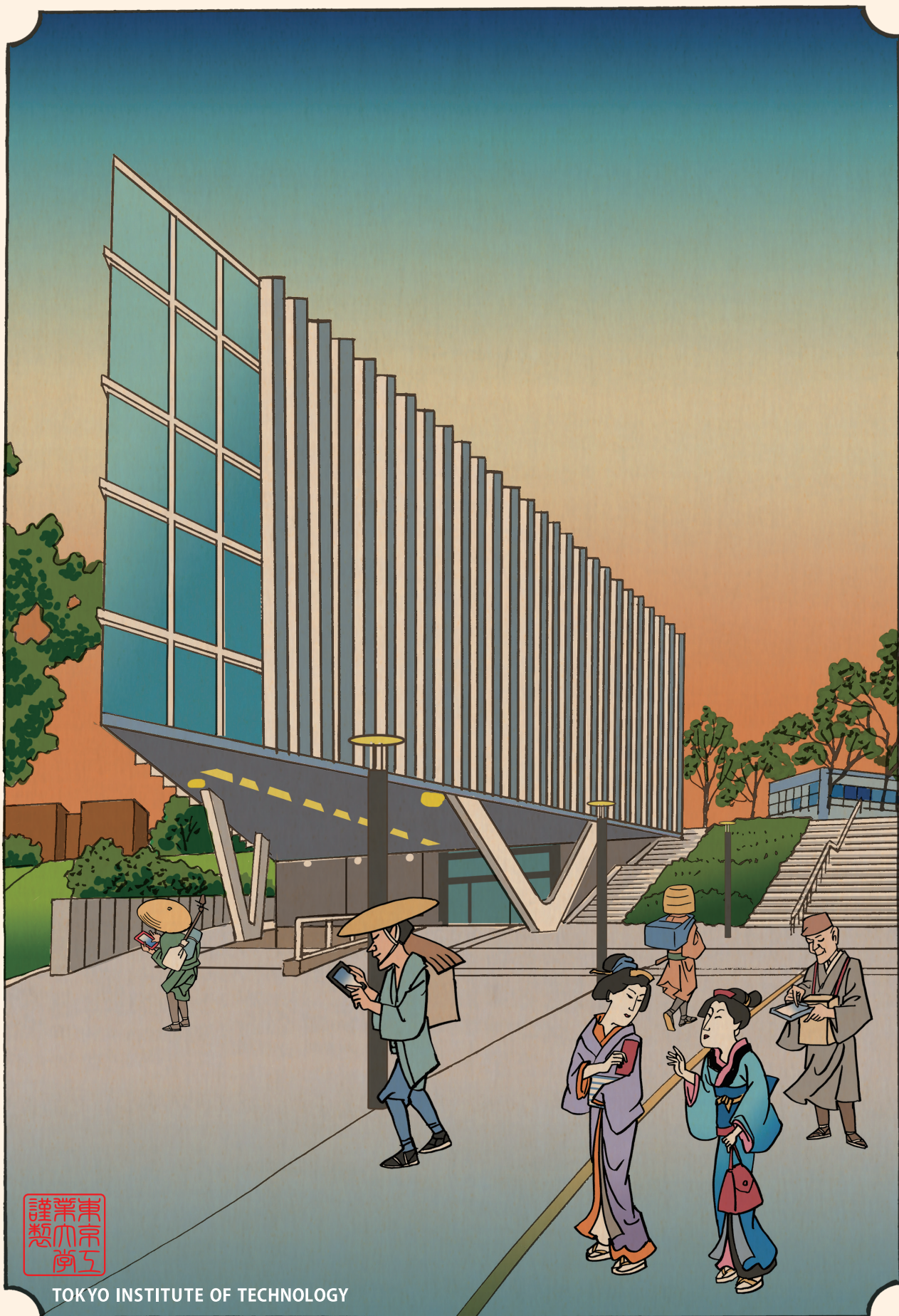
**Yaqing Zhang** *Tsinghua University, China*

Studying for five months at Tokyo Tech gave me a deeper insight into the way one can keep building in a city with a population way bigger than that of Switzerland but with increasingly limited space, while at the same time, dealing with different natural forces.

**Stefan Maier** *ETH Zurich, Switzerland*







TOKYO INSTITUTE OF TECHNOLOGY

# International Graduate Program (IGP)

Outline

Tokyo Tech launched its International Graduate Program in October 2007. The courses are conducted in English, providing an opportunity for qualified international students who may have little or no knowledge of the Japanese language to enroll in Tokyo Tech’s master’s or doctoral programs.

International Graduate Program (A)

- 1. Integrated Doctoral Education Program
- 2. Master’s Program

\*Students with outstanding academic records may be eligible to receive scholarships from Japan’s Ministry of Education, Culture, Sports, Science and Technology ( MEXT ).

International Graduate Program (B)

- 1. Tokyo Tech - Tsinghua University Joint Graduate Program\*
- 2. Doctoral Program for Tokyo Institute of Technology - RIKEN International School
- 3. Doctoral Program for applicants seeking scholarships from their home governments

\*IGP ( B ) 1 is for Tsinghua University students only.

International Graduate Program (C)

- 1. Master’s Program
- 2. Doctoral Program

Eligibility

Check the “Eligibility” section of the program in which you are interested, on the International Graduate Program web page. ( [www.titech.ac.jp/english/graduate\\_school/international/international\\_graduate/index.html](http://www.titech.ac.jp/english/graduate_school/international/international_graduate/index.html) ).

Application Procedure

Prior to submitting the application materials to the Admission Division, applicants must arrange for a Tokyo Tech faculty member to serve as an academic supervisor. Applicants must communicate directly with their desired faculty member at Tokyo Tech via email and obtain his/her consent to serve in this capacity. For contact information on faculty members, please use "STAR Search" ( researcher database ) on Tokyo Tech's homepage ( [www.titech.ac.jp/english/index.html](http://www.titech.ac.jp/english/index.html) ).

Tuition and Fees

- **Application fee** : JPY 30,000
- **Enrollment fee** : JPY 282,000
- **Tuition ( per year )** : JPY 635,400 ( Enrollment and tuition fees are subject to change. )

Admissions Schedule

Admission Category	Program Start	Application Guide Available	Application Deadline	Notification of Results
IGP (A) [Overseas Application]	September	Mid-September, a year before enrollment	Early December, a year before enrollment	Mid-March
IGP (B) 2 [Overseas Application]	September	Late January	Mid-April	Mid-June
IGP (B) 3 [Overseas/Domestic Application]	September	Mid-August, a year before enrollment	Late October, a year before enrollment	Mid-January
IGP (C) [Overseas/Domestic Application]	April	Mid-August, a year before enrollment	Late October, a year before enrollment	Mid-December, a year before enrollment
	September	Late January	Mid-April	Mid-June

IGP (B) 2 : IGP (B) Tokyo Tech-RIKEN International School

IGP (B) 3 : IGP (B) for applicants seeking scholarships from their home governments

Visit our website for more information

[www.titech.ac.jp/english/graduate\\_school/international/international\\_graduate/index.html](http://www.titech.ac.jp/english/graduate_school/international/international_graduate/index.html)



FAQ & Inquiries

[https://www.titech.ac.jp/english/graduate\\_school/international/international\\_graduate/igp\\_faq.html](https://www.titech.ac.jp/english/graduate_school/international/international_graduate/igp_faq.html)

E-mail : [ryugakusei@jim.titech.ac.jp](mailto:ryugakusei@jim.titech.ac.jp)







# YSEP

## Young Scientist Exchange Program



### Outline

Tokyo Tech offers a half-year ( single semester ) program in spring and autumn. In addition to conducting research under the guidance of an academic supervisor and taking the obligatory courses indicated below, students may also enroll in various other courses offered at Tokyo Tech.

#### Compulsory subjects ( 6 credits/semester )

- Research Project ( 4 credits )
- Topics on Japan ( 1 credit )
- Study on Japanese companies and industries ( 1 credit )

### Eligibility

- Students have to be from partner universities with tuition waiver agreement.
- At the time of participation, students must
  - a ) have completed at least two and a half years of study in a four-year bachelor's degree program,
  - b ) have completed at least two years of a three-year bachelor's degree program, OR
  - c ) be in a master's degree program.

### Application Deadline

- **Spring Semester** : August 20 of the previous year
- **Autumn Semester** : The end of February

### Period of Study

#### One Academic Semester ( 2 quarters )

- **Spring** : March to August
- **Autumn** : September to February

### Financial Support\*

- **Tuition and fees** : Application, enrollment and tuition fees for this program will be waived.
- **Scholarship** : YSEP students may have an opportunity to receive a JASSO scholarship.
- **Accommodation** : YSEP students receive priority in room allocation. Since the number of dormitory rooms is limited, Tokyo Tech cannot guarantee every student a room.

\*For details, please check with the exchange coordinator at your home university.

### Inquiries

E-mail : [ysep@jim.titech.ac.jp](mailto:ysep@jim.titech.ac.jp)

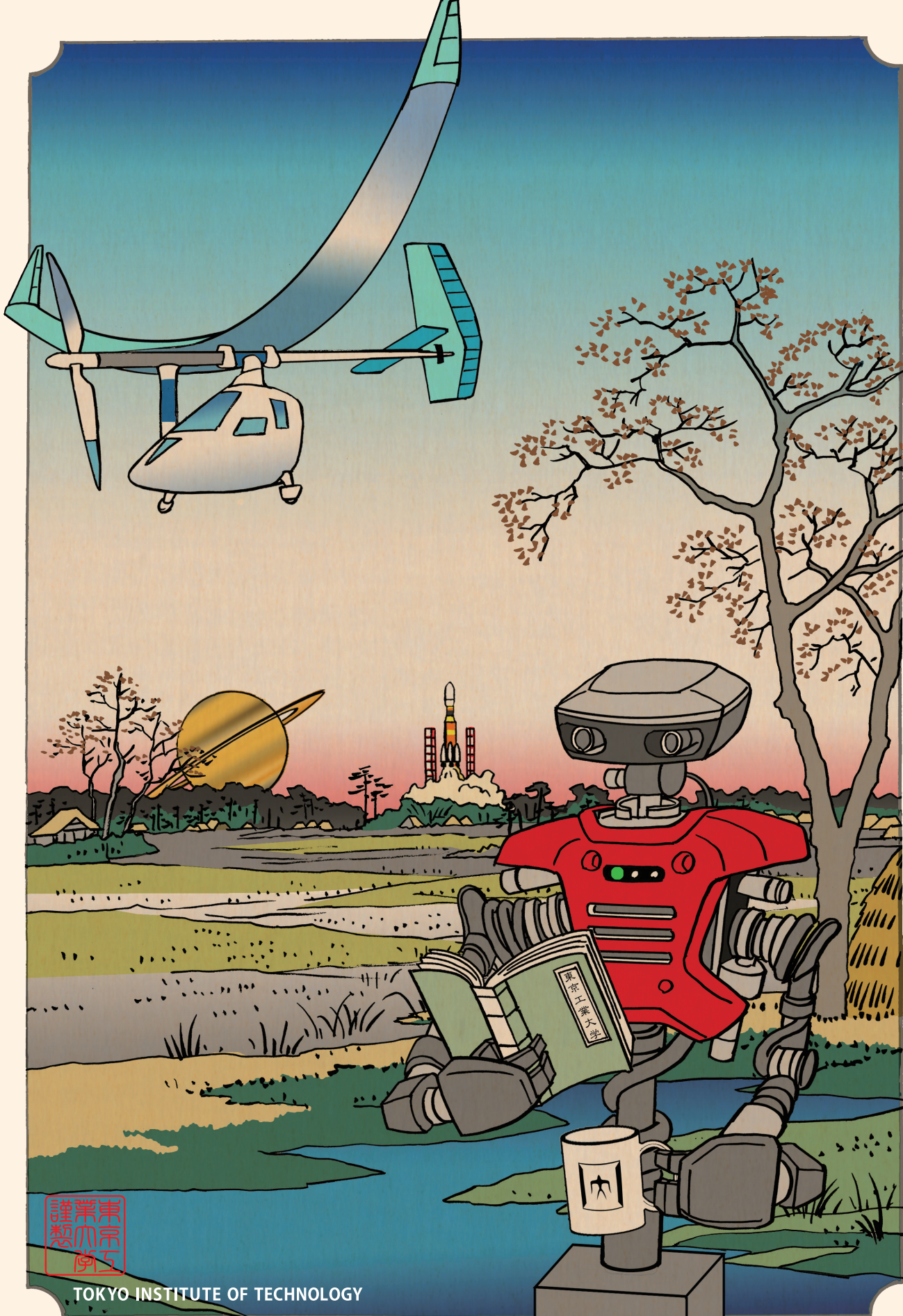
### Visit our website for more information

<http://www2.gakumu.titech.ac.jp/ysep/>



Note : The number of exchange students we accept each year is limited. Please consult with the student exchange officer at your home university.





# ACAP

Academic Cooperation Agreement Program



## Outline

### Research Oriented Program

Participants conduct research under the guidance of a Tokyo Tech faculty member ( academic supervisor ). With the permission of the course instructor and their academic supervisor, they may also enroll in graduate courses offered in English.

### Course Oriented Program

Graduate students and final-year undergraduate students may enroll in graduate courses offered in English. Undergraduate students who are not in their final year of study must possess sufficient Japanese language ability to take undergraduate courses offered in Japanese. Such students must submit official test results from the Japanese Language Proficiency Test ( JLPT ) or provide equivalent documentation of Japanese language ability.

## Eligibility

- Students have to be from partner universities with tuition waiver agreement.
- ( Research Oriented Program ) Students must be in a master's or doctoral program or be in their final year of undergraduate study at the time they begin research at Tokyo Tech.  
( Course Oriented Program ) Students must be in a master's or doctoral program or be in their second year or above of undergraduate study at the time they begin coursework at Tokyo Tech.

## Application Deadline

Please note that for students applying for a JASSO scholarship, the period of study starts in either April or September

- April start: December 10
- September start: The end of February

Please note that for students NOT applying for a JASSO scholarship , the period of study can start in any month

Application deadline / The 10<sup>th</sup> of the month which is more than three months prior to the desired start date ( e.g. For admission on September 1, the deadline is May 10 ).

## Period of Study

From 3 months to 1 year ( For JASSO scholarship recipients, the period must last from 2 quarters ( a semester ) to 4 quarters ( a year ) . )

## Financial Support\*

- **Tuition and fees** : Application, enrollment and tuition fees for this program will be waived.
- **Scholarship** : ACAP students may have an opportunity to receive a JASSO scholarship.  
( For students applying for this scholarship, the period of study must start in either April or September and last from 2 quarters ( a semester ) to 4 quarters ( a year ) . )
- **Accommodation** : ACAP students take priority when rooms are being allocated but we cannot guarantee each student a room, since the number of dormitory rooms is limited.

\*For details, please check with the exchange coordinator at your home university.

## Inquiries

E-mail : [inbound@jim.titech.ac.jp](mailto:inbound@jim.titech.ac.jp)

## Visit our website for more information

[www.titech.ac.jp/english/graduate\\_school/international/exchange/acap.html](http://www.titech.ac.jp/english/graduate_school/international/exchange/acap.html)



\*The number of exchange students we accept each year is limited. Please consult with the student exchange officer at your home university.





# International Visiting Students



(Students from non-partner universities)

## Outline

Students from non-partner universities are welcome to study at Tokyo Tech as non-degree seeking International Visiting Students. International Visiting Students will be able to study and do research at a laboratory under the guidance of a Tokyo Tech academic supervisor. Students may attend courses with the permission of the course instructor and academic supervisor, but cannot register for courses or receive an academic record from Tokyo Tech. International Visiting Students are responsible for paying the application, enrollment, and tuition fees.

## Eligibility

Undergraduate ( 2nd year or above ) and graduate students

## Application Deadline

Students may start their research on the first day of any month.

Application materials must be submitted to Tokyo Tech by the 10<sup>th</sup> of the month that is more than three months prior to the desired start date ( e.g. for admission on September 1, the deadline is May 10 ).

## Period of Study

Up to one year

## Tuition and Fees

- Application fee : JPY 9,800
- Enrollment fee : JPY 84,600
- Tuition (per month) : JPY 29,700

## Inquiries

E-mail : [inbound@jim.titech.ac.jp](mailto:inbound@jim.titech.ac.jp)

## Visit our website for more information

[www.titech.ac.jp/english/graduate\\_school/international/visiting.html](http://www.titech.ac.jp/english/graduate_school/international/visiting.html)

