

Assessment

Assessment will be held during the last week of the Program, which will indicate a student's performance in each of the 4 macro skills (speaking, listening, reading, and writing). Transcripts of attendance and exit test results will be forwarded approximately 5 weeks after completion of the Program.

Please note: UQC has a Bring Your Own Device (BYOD) policy as noted below on page 6.

Accommodation & Airport Services

Homestay Accommodation

Homestay accommodation is provided by external third-party suppliers listed below. These providers also offer airport pick up and drop off services.

Australian Homestay Network (AHN)

<https://www.homestaynetwork.org/>

AHN is Australia's largest and most experienced homestay company. Since 2008 they have placed more than 63,000 international students from 183 countries in safe and welcoming homestays. Each AHN homestay offers a unique Aussie experience with a range of meal packages, a comfortable furnished private bedroom including internet and all utilities, 24/7 support, comprehensive insurance coverage, and optional airport pick up.

Contact email: Leanne Wilson leanne@homestaynetwork.org

Blue Arrow Homestay Services

<https://www.bluearrow.com.au/>

Blue Arrow is a unique and customer service focused company that treats every student and client with the individual attention which they deserve. The Blue Arrow Homestay provider is a service for international students, visitors and tourists wishing to live in the comfort of a family home with wholesome home cooked meals, rather than hostel, hotel, or apartment style accommodation. They are also able to assist all visitors requiring temporary accommodation in the city.

Please note:

- To secure bookings, UQC **strongly recommends** that homestay services are arranged **directly** with one of these providers. Daily oversight and management of homestay placement and student issues is the responsibility of the client and the homestay provider and not UQC.
- Homestay accommodation should be confirmed with provider at the **earliest** opportunity and a minimum of 8 weeks before the program starts.

Purpose Built Student Accommodation (PBSA) & UQ Residential Colleges

大学寮は空室を見つけるのが難しい

UQ and Brisbane has modern and affordable accommodation options for international and domestic students. These accommodation options provide a sense of independence when students are away from home. Independent student living options are growing in popularity due to their sense of community, state-of-

the-art facilities, proximity to shops, cafes, and public transport. The PBSA providers which UQC works closely with include:

UQ Residential Colleges

College Name	Website	Contact
Cromwell College	www.cromwell.uq.edu.au	stay@cromwell.uq.edu.au
Duchesne College	www.uq.edu.au/duchesne/	hello@duchesne.uq.edu.au
Emmanuel College	www.emmanuel.uq.edu.au	enquiries@emmanuel.uq.edu.au
Grace College	www.grace.uq.edu.au	graceadmin@grace.uq.edu.au
Gatton Campus	www.uq.edu.au/halls/	halls@uqg.uq.edu.au
International House	www.internationalhouse.uq.edu.au/	ihrecep@inhouse.uq.edu.au
Kev Carmody House	WWW. uqres.com/	enquires@uqres.com
King's College	www.kings.uq.edu.au/	kings.college@uq.edu.au
St John's College	www.stjohns.uq.edu.au/	enquiries@stjohns.uq.edu.au
St Leo's College	www.stleos.uq.edu.au/	enquiries@stleos.uq.edu.au
The Women's College	www.uq.edu.au/womens/	admin@womens.uq.edu.au
Union College	www.union.uq.edu.au	union.college@uq.edu.au

Purpose Built Student Accommodation (PBSA)

PBSA Name	Website	Contact
iGLU	www.iglu.com.au/brisbane/	+61 (7) 3085 3434
Student One	www.studentone.com/	accommodation@studentone.com
Scape	www.scape.com.au/	+61 (3)977 8088
UniLodge	www.unilodge.com.au/	info@unilodge.com.au

There are other PBSA providers across Brisbane.

Airport Transfers

UQC does not provide this service and we recommend that the client arrange airport services **directly** with one of these homestay providers.

Please note:

To secure bookings, UQC recommends that airport services are arrange **directly** with one of these providers and this arrangement should be confirmed with provider at the **earliest** opportunity, and a minimum of 8 weeks before the program starts.

Local Transport

Public transport and travel costs are not included and must be paid for by individual students. The average cost of transport to and from the University and UQC is approximately AUD\$45 per week. UQC recommends that students purchase a **Brisbane City Go Card** for travel on the public transport network. Go Card prices for travel are cheaper than buying individual trip tickets.



2024 AHN FEE SCHEDULE

APPLIES TO STAYS FROM 1 JANUARY 2024

AHN is the industry leader for homestay in Australia and delivers the highest quality of service for visiting students. Our experienced and dedicated team use our Homestay Management System (HMS™) for managing homestay placements throughout Australia. We ensure that everyone involved in homestay can have a unique, safe and enjoyable cultural and educational experience. The Australian Homestay Network (AHN) offers a simple fee structure to better serve our students' needs and expectations. We aim to find a homestay within 60 minutes travel by public transport to your school, based on host availability and student preferences. Applying early guarantees the best options. Please visit www.homestaynetwork.org for further information.

MATCHING FEE INCLUDES

- Selection and training of appropriate host
- System support during application process
- Ensuring that all appropriate authority clearances are in place
- Host residence visit and approval
- Placement of student (student-host preference matching)
- Follow up support if required at any time during placement
- Liaison with education institution and agent as appropriate

WEEKLY FEE INCLUDES

- Meals and accommodation as specified
- Homestay host providing additional support for students
- Compulsory AHN insurance as per AHN insurance policy
<https://www.homestaynetwork.org/ahn-insurance>
- Professional 24/7 support from AHN
- Ongoing monitoring of host suitability
- HMS system access for agents, institutions, students and hosts
- Local AHN supervisor support
- Internet access

Please note:

- A once off Matching Fee plus a minimum of 4 weeks homestay fees (see table below for fees per destination) will be included on your first invoice.
- AHN makes every reasonable effort to ensure the accuracy and validity of the information provided in its brochures, fee schedules and website pages. However, things change, sometimes without notice. Pricing shown here or on any other marketing material is not guaranteed to be accurate. Please check your quote which will be issued upon receipt of the student application.
- Internet access is included in weekly fees. Please be aware that AHN does not guarantee the availability, quality, access times and download limits of host-supplied internet.
- If daily transport is available, it may incur additional fees per week. This will be included in your initial quote as requested.
- Vegetarian, Vegan, Gluten Free, Kosher and Halal meal options can be made available and may incur additional fees per week. This will be included in your initial quote as requested.
- Airport reception/pickup prices listed are one-way only and may require additional fees depending on airport location and destination.
- Guardianship packages (through reputable third-party provider) available upon request.
- Matching and Weekly Fees for areas within regions may differ. Visit <https://www.homestaynetwork.org/students/pricing/> to view the most up-to-date pricing.
- Prices for group enquiries may differ. Please contact your local office for a customised quote specific to your needs.
- Fees may vary for schools where there are special arrangements with AHN, please check your quote.
- Additional fees may apply for last minute placements.

Apply now to receive a homestay quote at au.homestaynetwork.org/guests/new

Contact us for more information:

1300 024 628 • info@homestaynetwork.org • homestaynetwork.org/students/pricing

2024 AHN FEE SCHEDULE

APPLIES TO STAYS FROM 1 JANUARY 2024

Region	HOMESTAY PACKAGES FOR STUDENTS OVER 18								HOMESTAY PACKAGES FOR STUDENTS UNDER 18				FEES FOR ADDITIONAL SERVICES		
	Complete		Traditional **		Dinner Only		No Meals		Complete		Traditional **		Dietary Requirements: Vegan, Halal, Vegetarian etc.	Daily Transport # (Mon – Fri)	^ Airport Transfers # (one way)
	3 meals - 7 days		2 meals – Mon-Fri 3 meals – Sat-Sun		Dinner - 7 days		No meals		3 meals - 7 days		2 meals – Mon-Fri 3 meals – Sat-Sun				
	Weekly Fee \$		Weekly Fee \$		Weekly Fee \$		Weekly Fee \$		Weekly Fee \$		Weekly Fee \$				
Single	Share	Single	Share	Single	Share	Single	Share	Single	Share	Single	Share				
Adelaide	\$370	\$340	\$340	\$310	\$320	\$290	N/A	N/A	\$385	\$355	\$355	\$325	\$50	N/A	\$170
Brisbane	\$370	\$340	\$340	\$310	\$315	\$285	\$280	\$250	\$390	\$360	\$360	\$330	\$50	\$100	\$160
Canberra	\$380	\$350	\$360	\$330	\$325	\$295	\$285	\$255	\$400	\$370	\$380	\$350	\$50	N/A	\$160
Darwin	\$370	\$340	\$340	\$310	\$315	\$285	\$280	\$250	\$390	\$360	\$360	\$330	\$50	\$50	\$160
Gold Coast	\$400	\$370	\$370	\$340	\$345	\$315	N/A	N/A	\$420	\$390	\$390	\$360	\$50	\$75	\$160 (OOL) \$190 (BNE)
Hobart	\$380	\$350	\$350	\$320	\$325	\$295	\$295	\$265	\$395	\$365	\$365	\$335	\$50	N/A	\$170
Melbourne and Regional Victoria	\$410	\$380	\$380	\$350	\$350	\$320	\$305	\$275	\$430	\$400	\$400	\$370	\$50	N/A	\$175
Perth	\$385	\$355	\$350	\$320	\$325	\$295	\$295	\$265	\$405	\$375	\$370	\$340	\$50	N/A	\$160
Sydney	\$410	\$380	\$380	\$350	\$350	\$320	\$305	\$275	\$430	\$400	\$400	\$370	\$50	N/A	\$175
Lismore and Coffs Harbour	\$330	\$300	\$300	\$270	\$275	\$245	\$250	\$220	\$345	\$315	N/A	N/A	\$50	\$60	POA
Newcastle	\$400	\$370	\$370	\$340	\$335	\$305	\$285	\$255	\$420	\$390	\$390	\$360	\$50	\$50	N/A
Wollongong	\$400	\$370	\$370	\$340	\$335	\$305	\$285	\$255	\$420	\$390	\$390	\$360	\$50	\$50	\$170
Sunshine Coast and Toowoomba	\$360	\$330	\$330	\$300	\$305	\$275	\$280	\$250	\$380	\$350	N/A	N/A	\$50	\$50	\$140
Townsville, Cairns, Rockhampton and Bundaberg	\$390	\$360	\$360	\$330	\$335	\$305	\$310	\$280	\$410	\$380	N/A	N/A	\$50	\$50	\$140
Regional Western Australia	\$405	\$375	\$370	\$340	\$345	\$315	\$315	\$285	\$425	\$395	\$390	\$360	\$50	POA	POA

NATIONAL MATCHING FEE \$340*

* Matching Fee of \$380 may apply for High School students where additional services are provided.

** VIP Homestay: Traditional package price plus additional \$60 per week. Subject to availability.

Daily Transport and Airport Transfers may incur additional fees and are subject to availability.

^ Surcharge may apply to airport pick up fees for arrivals between 8pm and 6am or for additional wait times at the airport.

PARENT NOMINATED HOMESTAY can be arranged by AHN for a \$340 Matching Fee* and \$50/week Homestay Management Fee. Product must be approved by the Education Provider.

Apply now to receive a homestay quote at au.homestaynetwork.org/guests/new

Contact us for more information:

1300 024 628 • info@homestaynetwork.org • homestaynetwork.org/students/pricing



Brisbane Student Apartments



5 Bedroom Apartment (Max. 1 person per room)

\$469AUD* per week per person



Common Areas

- Shared living and dining area
- Kitchen including stone benchtops, cooktop, microwave, oven, 2-door fridge, pantry
- All Kitchen Essentials
- Flat-screen television
- 2 shower bathrooms
- 1 shower ensuite

Bedrooms

- King single bed (1055 x 2030mm)
- Bedhead shelf
- Study desk
- Pinboard
- Desk chair
- Bookshelf
- Robe
- Air-conditioning
- Unlimited free Wifi internet
- Secure swipe card access
- Opening windows
- Block-out fabric blinds

Bed & Bath Pack (Available for purchase if needed)

- Bath Towel
- Pillow
- Quilt
- Quilt cover
- Flatted Sheet
- Fitted Sheet

**Price subject to change & a departure cleaning fee of \$240 per room is to be paid prior to arrival*



Brisbane Student Apartments



Single Studio (Max. 1 person per room)

\$619AUD* per week per person



Single Studio

- Kitchen including stone benchtop, cooktop, microwave, fridge
- All Kitchen Essentials
- Dining bench and stools
- King single bed (915 x 2030mm)
- Study desk
- Pinboard
- Desk chair
- Shelving
- Robe
- Shower ensuite
- Air-conditioning
- High ceilings, large windows
- Windows do not open
- Block-out fabric blinds

Bed & Bath Pack (Available for purchase if needed)

- Bath Towel
- Pillow
- Quilt
- Quilt cover
- Flatted Sheet
- Fitted Sheet

Services and Facilities



24/7 ONSITE STAFF



GAMES AREA



UNLIMITED WIFI INTERNET



GYM



CINEMA



STUDY FLOOR



LAUNDRY FACILITIES



FREE SHUTTLE BUS TO UQ



POOL



17 MINUTES TO UQ ST LUCIA CAMPUS





Unilodge Park Central Brisbane Student Apartments



6 Bedroom Apartment (Max. 1 person per room)

\$409AUD* per week per person

Room Features



Air conditioning



Desk



Microwave



Refrigerator



Stove



Shower



Tables and chairs



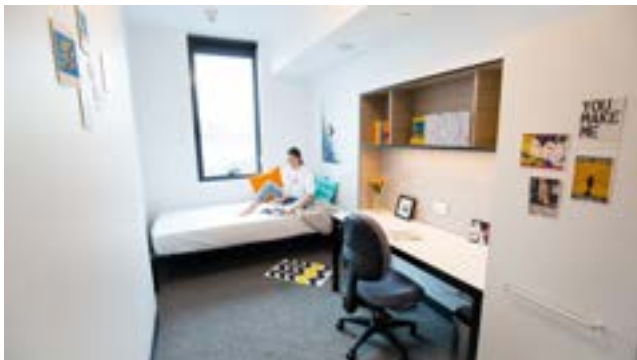
Shared bathroom



Single bed



TV



Studio Apartment (Max. 1 person per apartment)

\$589AUD* per week

Room Features



Air conditioning



Desk



Microwave



Stove



Shower



Single bed



*Price subject to change & a departure cleaning fee of \$239 per room is to be paid prior to arrival



Bed and Bath Essentials (Available for purchase if needed)

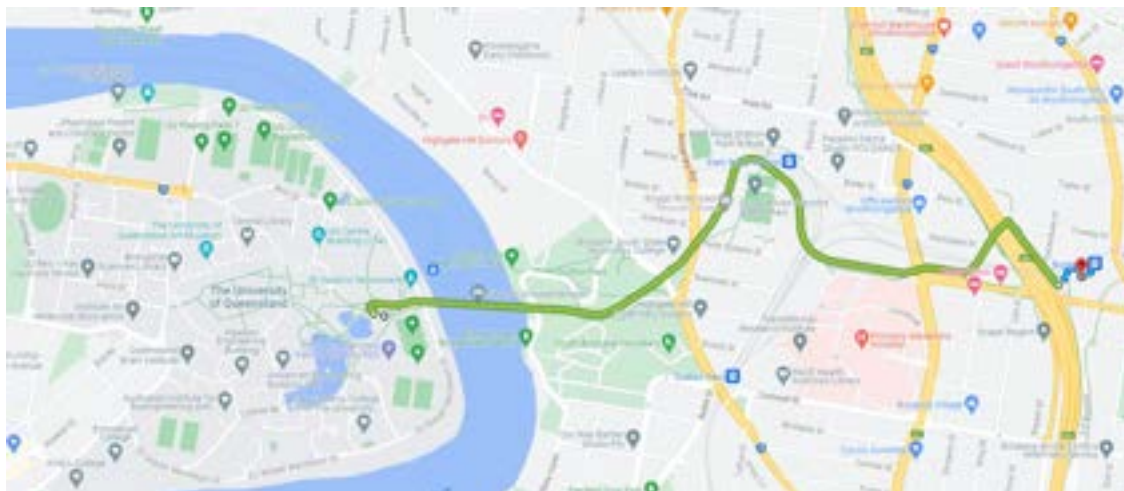
- Flat Sheet
- Fitted Sheet
- Pillow Case
- Pillow
- Quilt Cover
- Quilt Insert
- Bath Towel
- Hand Towel
- Face Washer
- Bath Mat

Property Features

24-hour security	Air conditioning	Check-in kiosk	Coin or card operated laundry	Wheelchair access	Multilingual staff	Accessible parking
Barbeque grills	Public area air conditioned	Evening reception	Front desk	Managers reception	Onsite laundry	Concierge lounge
High speed internet access in public areas	Wireless internet connection in public areas	Train access	Secured parking	Ironing board	Accessible rooms	Lobby
Security Cameras	Security Patrols	Free Bicycle storage	Theatre / cinema room	Bus access	Study Rooms	Kitchens
Public Transport Close By	Community events	Intercom	Visitor Parking	On Site Reception (Operated During Business Hours)	After Hours Emergency Staff	

Transportation to St Lucia Campus

8 minutes



FAQ



Unilodge Resident Handbook



Unilodge Virtual Tour



Unilodge Park Central Info